



Museum Notes

A Publication for Members of the NIU Art Museum

Become a
Friend of the
NIU Art Museum.
Join Today!

Welcome to our
newest Members!

New Members

Stephen and
Elinor DeGolier
Scott and Kristin Miller

Renewals

Renie Adams
Rudolf and
Ingeborg Bisanz
Ken and
Penny Cameron
John and Nancy Castle
Dan and
Joanne Dillman
Cherie Hauptman
Stephen and
Deborah Haliczar
Teresa Iverson
Steven A. Johnson
Nicholas Noe
Julie Olsen
Dale Osterle
Brian Reis and
Mary LaClair
Michael and
Robin Rothamer
Morley and
Maureen Russell
Dan and
Virginia Seymour
Ivan and Judith Shils
Johanna and
Philip Vandrey

The support the Museum receives
through your financial gifts and
your enthusiasm for the Museum
allows us to produce award
winning exhibitions and programs
for the University, DeKalb
community, and beyond.
Thank you!



Current Exhibitions

Winter 2018-2019 Transparency Suite

Transparent Factors in Form and Content
Rotunda and South Galleries

Transparent Factors presents literal and figurative interpretations and investigations along the spectrum of transparency, translucency and opacity. Artists in the exhibition explore the capacity of "transparent" mediums like air, water, light and glass to clarify and reveal, or to obscure and distort (sometimes simultaneously). Some artists see visual phenomena as metaphors for the openness, disclosure and accessibility (or lack thereof) in practices of wielding authority, making decisions or disseminating information.

Continued page 2.

Vanishing Art from Myanmar: The Buddhist Reverse Glass Painting Tradition
North and Hallcase Galleries

Explores the complex Buddhist tradition as it is revealed through the work of some artists from the last village in Burma dedicated to the reverse glass painting technique and tradition known since the art form's introduction to the region in the 18th century. Curated by Dr. Catherine Raymond, Director, Center for Burma Studies and Professor of Art History and presented in conjunction with the International Symposium "Looking Through The Glass: The Asian Reverse Glass Painting Traditions" on November 16, 2018. Raymond's research was funded by a Rakow Grant from the Corning Museum of Glass in Corning, NY. Continued page 2.

Photo below: Nat U Min Kyaw (Lord Gambler) from Pakhan Kyi and his Companion Mr. Brown. Artist Soe Aung (Syriam, Myanmar); Late 20th century, Burma/Myanmar; Glass, enamel paint, metallic foil; (19.25" x 15.25 in.). Burma Art Collection. BC2017.01.18.



Inside this Issue

- Exhibits cont. 2
- Announcements 3
- Events Calendar 4
- Get-on-the-Bus Trips 5
- Volunteers / Sponsors 6
- Membership Renewal 7
- Collection Spotlight 8

Subscribe to the museum's email announcements to stay informed between newsletters.

To sign-up, visit
niu.edu/artmuseum/about/contact-us.shtml

Confirm your subscription by clicking the link in the confirmation email.

Transparent Factors continued...

Work for *Transparent Factors* was selected by invitation, national call for entries, and from the NIU Art Museum Collections. Reviewed and initially selected by the NIU Art Museum Exhibition Advisory Committee. Final curation, selection of pieces and installation layout developed by Peter B. Olson, Assistant Director, Curator and Collections Manager, NIU Art Museum. Artists include: Tom

Burtonwood, Caleb Cole, Nicole Czapinski, Nancy Fewkes, Carrie Fonder, Shawna Gibbs, Gibson + Recoder, Thomas Gondek, Maki Hajikano, Karen Hillier, Suda House, Ernest Jolicouer, Nicole Lenzi, Stephanie McMahon, Christopher McNulty, Jeroen Nelemans, Robert Rauschenberg, Thomas Skomski, Vanessa Viruet, Andy Warhol and Katie Waugh.▪

Photo above: Thomas Skomski. *Unknown with Priapus*. 1992. Glass bottle, water, steel, and wax. NIU Art Museum Collection. 2005.89a-d. Gift of the artist.

Vanishing Art continued...

Once very popular in Asia from the 18th to the mid-20th century, the reverse glass painting (RGP) art form was inspired by the European tradition of painting directly on flat glass to be seen through the reverse unpainted side. RGPs were known at the court in Burma since the 18th century. They became popular between the mid-19th and the mid-20th century for Buddhist merit-making and worship of the divine due to their glossy quality. With the advent of print, the tradition vanished. RGPs were again revived by devotees of nats spirits and wizard followers in the 1970s until the turn of 21st century.

RGPs donated to the Burma Art Collection at NIU over the last 30 years prompted the study of the vanishing art form. Since 2014, the Reverse Glass Painting Project was launched by the curator of the collection along with a team of students and faculty from NIU and two Burmese universities. Together, they have explored the RGP techniques and interviewed the remaining Burmese reverse glass painters. This exhibition is the result of this interdisciplinary research and collaboration.▪

Looking Through the Glass: Asian Reverse Glass Painting Traditions

Center for Burma Studies

Friday, November 16, 2018
Altgeld Hall 315, 9 a.m. - 4:30 p.m.

Symposium Schedule

- 9 a.m. Light breakfast
- 9:45 a.m. Welcome Remarks
- 10 a.m. Remarks on Southeast Asian Reverse Glass Painting

Burma/Myanmar

- 10:30 a.m. *Burmese Reverse Glass Painting in Perspective*
Catherine Raymond, Ph.D., Northern Illinois University
- 11 a.m. *The Burmese Artist-Chemist: The Wet Collodion Process in Mass-Produced Reverse Glass Paintings*
Carmin Berchiolly, M.A. art history, Northern Illinois University
- 11:30 a.m. *A Modern Escapade: Reverse Glass Painting in Bagyi Aung Soe's Oeuvre*
Yin Ker, Ph.D., Nanyang University, Singapore

Noon - 1:30 p.m. Lunch break (on your own)

China

- 1:30 p.m. *Chinese Reverse Glass Painting: Collection at The Corning Museum of Glass*
Shelly Xue, Ph.D., Shanghai Institute of Visual Art Carpenter Foundation Fellow for Asia Glass at Corning Museum of Glass

Indonesia

- 2 p.m. *The Heart and the Fringes: Holy Places of Islam through Javanese Reverse Glass Painting*
Jerome Samuel, Ph.D., Institut National des Langues et Civilisations Orientales, INALCO, Paris
- 2:30 p.m. *Glimpses of Indonesia: An Exploration of Represented Realities in Collected Glass Paintings*
Rosalia Sciortino, Ph.D., Mahidol University, Bangkok

Cambodia

- 3 p.m. *Looking for Reverse Glass Painting in Cambodia"*
Sopheap Somcheat, National Museum, Phnom Penh and Catherine Raymond, Ph.D., Northern Illinois University
- 3:30 p.m. *The Montague Collection of Reverse Glass Painting from Cambodia*
Joel Montague, collector of Cambodian Reverse Glass Paintings
- 4 p.m. Closing Remarks and Questions & Answers

International Symposium organized by Catherine Raymond, Director Center for Burma Studies. For more information visit niu.edu/burma. Lectures are open to the public. Please RSVP to BurmaStudies@niu.edu

Funded with support from the Allen Series Fund, Division of Art History, NIU School of Art and Design; the NIU College of Visual and Performing Arts, the NIU Graduate School, the NIU Division of Research and Innovation Partnerships; the NIU Center for Southeast Asia Studies, the Burma Studies Foundation and the Center for Burma Studies at NIU. the public. Please RSVP to BurmaStudies@niu.edu.

Museum Staff

Jo Burke, Director
 Peter Olson, Assistant Director
 Stuart W. Henn, Coordinator
 Marketing and Education

Graduate Assistants

Zach Bath
 Christina Kang

Christina Warzecha
 Extra Help, Installation Preparator

Museum Assistants

Isabel Angulo
 Georgi Beck
 Ashly Bieche
 Avery LaPlante
 Ari Norris
 Sarah O'Heron
 Sai Harini Perugupalli
 Elizabeth Russo

Exhibition Advisory Committee

Michael Bennett
 Mary Glynn Boies
 Nina Rizzo
 Diane Rodgers
 Peter Van Ael


Education Advisory Committee

Joshua Anderson
 Cynthia Hellyer-Heinz
 Kryssi Staikidis

If you are interested in joining the Museum's volunteers contact the Museum to share your talents!

Visit niu.edu/artmuseum
 Phone: 815-753-1936
 Email: artmuseum@niu.edu

Receive our email updates by visiting our website:
niu.edu/artmuseum/contactus.

 Friend us on Facebook

 Follow us on Twitter
 @NIUArtmuseum

Parking is available in the [Visitor Pay Lot](#) located at 200 Carroll Ave., east of Annie Glidden Rd. on Lincoln Hwy. Limited metered spots and handicapped parking is available in front of Altgeld and Lowden Halls. Campus parking is free on weekends and after 5 p.m. weeknights.



Jack Arends Continued from page 8.

The NIU School of Art and Design is celebrating the 50th Anniversary of Jack Arends Hall, a building named for Arends, who was crucial in securing funding for the multi-million dollar building to house the University's visual arts program.

"A weaver, designer and painter, Arends chaired the NIU art faculty from his arrival at the DeKalb campus in 1962 until 1973. Under his direction the faculty grew from 14 professors to 70 by 1968. By the time its four-story 104,000-square-foot building was dedicated in 1971, the department had more than 1,000 undergraduate art majors and 340 graduate art students."

An Iowa native, Arends graduated from the University of Northern Iowa before attending the Stone City Art Colony and School in 1932 after he received an art scholarship. There he studied under American Regionalist Grant Wood before leaving to attend Columbia University's Teachers College where he received a Doctorate in Art and Art Education in 1952. In the photo, Arends is seated far right while Grant Wood, standing at the left, can be identified by his signature bib overalls. •

"Jack Arends, Headed NIU Art Department." *Chicago Tribune*. November 25, 1986. Accessed October 20, 2018. <https://www.chicagotribune.com/news/ct-xpm-1986-11-25-8603280766-story.html>.

Photo above courtesy of the Regional History Center, Northern Illinois University Archives, DeKalb, Illinois.

Photo right courtesy *When Tillage Begins: The Stone City Art Colony and School*. October, 2003. Accessed October 20, 2018. <http://projects.mtmercy.edu/stonecity/artists.html>.

Staff Announcements

Museum Gallery Attendant Sarah O'Heron's work was recently on view at the Chicago Center Gallery as part of the NIU School of Art and Design's LAUNCH Resident Exhibition. In June, O'Heron completed the LAUNCH Invitational Residency, a nomination-based professional development program organized by the Chicago Artists Coalition for young artists from Chicago area undergraduate schools.

O'Heron is a jeweler and metalsmith whose work combines found natural materials integrated with metalwork to create the wearable and non-wearable art pieces she makes. •
 Image: *Deerest Necklace*, silver, felt, cubic zirconia, deer jaw bone, (9x7") 2018. Courtesy the artist.



Arts Blog

Sign up for the Arts Blog

Keep up with the most interesting stories from all of the areas that make up Northern Illinois University's College of Visual and Performing Arts, and don't miss any of our exciting upcoming events.

<http://niuarts.com/newsletter-opt-in/>



Events and Programs

Tuesday, November 13
Gibson + Recoder:
 Transparent Processes
 Sandra Gibson and
 Luis Recoder
 Artist Slide Presentation
 5-6 p.m., Altgeld 125



Wednesday, January 23
Layers of Meaning
 Informal Curator Talk
 with Peter Olson
 12:10-12:50 p.m., Museum



Thursday, November 15
Public Opening Reception
 Transparency Suite
 5-7 p.m., All galleries, NIU Art Museum

Wednesday, January 30
Idolizing Images
 Jeroen Nelemans
 Artist Slide Presentation
 5-6 p.m., Altgeld 125



Friday, November 16
Looking through the Glass:
 Asian Reverse Glass Painting Traditions
 International Symposium organized by
 the Center for Burma Studies
 See full symposium schedule page 2.

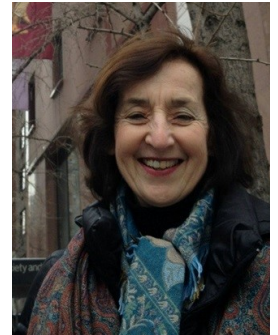
Monday, February 4
Open Window
 Stephanie McMahon
 Artist Slide Presentation
 6:15-7 p.m., JAH/VAB 103



University Holidays
 November 21-26
 Closed for Thanksgiving
 December 15-January 14
 Closed for winter break



Friday, February 8
The Genesis of a Project:
 Reverse Glass Painting in
 Southeast Asia
 Catherine Raymond, Director
 Center for Burma Studies
 Brown bag luncheon sponsored
 by the Center for Southeast
 Asian Studies
 Noon – 1 p.m.; Campus Life 100



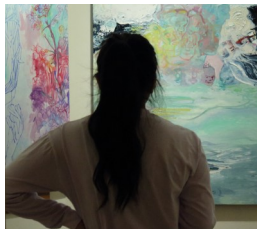
Saturday, January 19
Museum Members Private Event
 Watch for your invitation

Only have a few minutes to spare?
Drop-in and join us for a quick talk!

Be in the galleries during selected times to hear a two to five-minute Flash Tour with Museum staff as they give insider explanations into a single work on view. Look for the logo label in the galleries at these Flash Tour times starting November 20:

Tuesday 2:30 p.m.
 Wednesday 3:30 p.m.
 Thursday 12:30 p.m.
 Thursday 5:15 p.m.*

*Except during other scheduled Museum events.



**School of Art and
 Design Visiting Alumni**

Lynn Stockton, Art Ed Lecture
 Wednesday, November 14
 5-6 p.m., Jack Arends 211

Valerie Wallace Artist Lecture
 Thursday, November 15
 5 – 6 p.m., Jack Arends TBD

For questions or more information on the events at the NIU Art Museum please phone 815-753-1936 or email the Education Coordinator at shenn1@niu.edu.

Elizabeth Allen Visiting Scholars in Art History Alumni Speakers

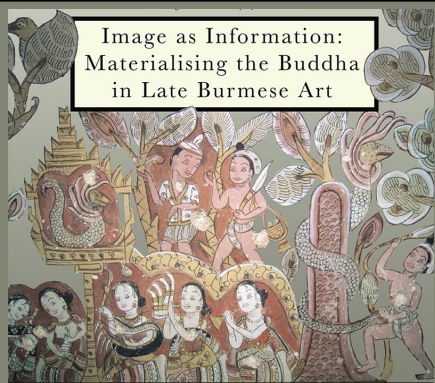


Image as Information:
Materialising the Buddha
in Late Burmese Art



Tuesday, November 20

Alexandra Green,
Henry Ginsburg Curator
for Southeast Asia,
British Museum

5 p.m., Jack Arends, Rm 111

Monday, February 4, 2019
"All Eyes on Space: An Architectural History of Television" Samuel Dodd,
 Visiting Assistant Professor, Ohio University

Wednesday, February 27, 2019
"Serious Change: Toward A More Meaningful Diversified Artworld"
 Freida High W. Tesfagiorgis, Evjue-Bascom Professor Emerita of African and African American Art History and Visual Culture, University of Wisconsin Madison

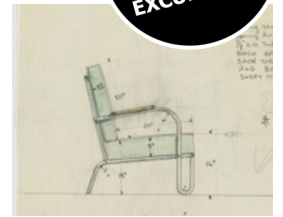
Tuesday, April 9, 2019
"Xena Warrior Princess Meets Efraín Rios Montt: Contemporary Maya Dance and Pop Culture Imagery in Highland Guatemala" Rhonda Taube, Professor and Chair, Department of Art and Art History, Riverside City College

Lectures 5 p.m., Auditorium 100,
 Jack Arends Hall/Visual Arts Building.

Wednesday, November 28

Chicago Streamlines

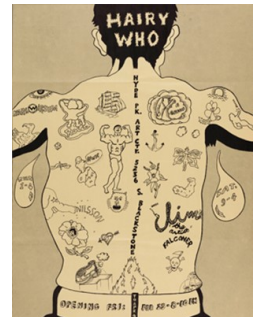
Visit the Chicago History Museum's exhibition on Chicago's vibrant position in American design and the city's role in shaping the popular streamline movement in the early part of the 20th century. The movement came of age during the depths of the Great Depression when Chicago emerged as a center of streamlined design showcased at the 1933-34 Century of Progress World's Fair. Many local Chicago brand icons adopted the styling including Radio Flyer, Sunbeam and Farmall. Afterward enjoy dinner at J. Parker, a roof top restaurant in the neighborhood. *Group size limited to 15 participants! RSVP by 11/26.* Departure 9 a.m. Expected Return 8 p.m. Price: NIU Art Museum Members \$25; Non-Member St/Sr \$30; Non-Member Adult \$35. Ticket price includes transportation. Chicago History Museum admission on your own; Adults \$19 St/Sr \$17. Meals and incidentals not included.



Friday, December 7

The Chicago Imagists: Hairy Who?

Explore this unique moment in Chicago's art scene and discover the self-defined group of artists that included Jim Falconer, Art Green, Gladys Nilsson, Jim Nutt, Suellen Rocca, and Karl Wirsum. Visit the Art Institute of Chicago's exhibition *Hairy Who: 1966-1969* that explores the group's bold, graphic work and history of their exhibitions at the Hyde Park Art Center. Also visit the Elmhurst Art Museum's exhibition of Imagists work on loan from the Elmhurst College Art Collection curated by Suellen Rocca with a special private introduction and overview from the distinguished artist herself. Since 2006, Rocca has served as the Curator and Director of Exhibitions overseeing the Imagist collection at the College and has championed its importance. **RSVP by 11/30.** Departure 9 a.m. Expected Return 6 p.m. Price: NIU Art Museum Members \$25; Non-Member St/Sr \$30; Non-Member Adult \$35. Ticket price includes transportation. AIC Admission on your own (AIC Members free; IL residents \$22 Adults; \$16 St/Sr.; EAM admission free first Friday of the month). Meals and incidentals not included.



Tuesday, February 26

Alexander Calder/Jeff Koons at the MCA

Visit the MCA, Chicago's celebratory 50th Anniversary exhibition that brings together two of the most important artist in the Museum's collection. Calder's weightless sculptures and Koon's celebration of the mundane and concrete, in *Heaven and Earth: Alexander Calder and Jeff Koons* that highlights both artists' interest in playing with balance and gravity to make compelling sculptural statements while reveling in the contrasts between high art and mundane materials. While in Chicago visit the River North and West Loop gallery districts to visit several of the galleries at your own pace with time for dinner in River North's or Water Tower's restaurants. **RSVP by 02/19.** Departure 9 a.m. Expected Return 7 p.m. Price: NIU Art Museum Members \$25; Non-Member St/Sr \$30; Non-Member Adult \$35. Ticket price includes transportation. MCA Admission free on Tuesday for IL residents. Meals and incidentals not included.



Image top to bottom: Furniture sketch by Wolfgang Hoffmann for W. Howell Company, c. 1935. Chicago History Museum. Jim Falconer, Art Green, Gladys Nilsson, Jim Nutt, Suellen Rocca, and Karl Wirsum. *Hairy Who*, 1966. The Art Institute of Chicago, gift of Gladys Nilsson and Jim Nutt. Alexander Calder, *Performing Seal*, 1950. Sheet metal, paint, and steel wire; 33 x 23 x 36 in. (83.8 x 58.4 x 91.4 cm). The Leonard and Ruth Horwich Family Loan, EL1995.7. © 2017 Calder Foundation, New York/Artists Rights Society (ARS), New York. Photo: Nathan Keay, © MCA Chicago.

The NIU Art Museum's Get-On-The-Bus trips should not be missed!

Phone 815-753-1936. Payment may be made with cash, check made out to NIU, or major credit card over the phone.

Our Volunteers

The Museum would like to extend its gratitude to the following volunteers and individuals for their continued support. Special thanks to: **Michael Bennett** for installation and construction assistance; **Bob Banke** for his photographic services at our receptions and of the collection; and **Terri Smialek** for serving as a Museum gallery attendant this fall. From the College of Visual and Performing Arts Dean's office, **Susan Carter** for accounting assistance and Jay Monteiro for Membership and event support. Museum Studies students Nathaniel Pendergraft and Markie Striegel for installation of *Vanishing Art*.

Support

The exhibitions and programs of the NIU Art Museum are sponsored in part by the Illinois Arts Council Agency; the Friends of the NIU Art Museum; and the College of Visual and Performing Arts' Season Presenting Sponsor Shaw Media. Additional support came from the Center for Burma Studies, the Center for Southeast Asian Studies, and the interdisciplinary graduate certificate program in Museum Studies at NIU.

Exhibitions

Artwork and objects for *Transparent Factors in Form and Content* and *Vanishing Art from Myanmar: The Buddhist Reverse Glass Painting Tradition* exhibitions are on loan from the exhibiting artists, the Burma Art Collection at NIU and the NIU Art Museum Collections. ■

Sustaining Members

Sponsors

Renie Adams
Rudolf & Ingeborg Bisanz
Peggy Burke & Ed Wietecha
Susan Carter & Robert Sabin
John & Nancy Castle
Edward & Donna Flanagan
Lesley Gilbert
Stephen & Deborah Haliczer
Janet Hathaway
Steven A. Johnson
Ronald G. Klein
Jerry & Miriam Meyer
Mrs. William Monat
James & Dianne Moss
Nicholas Noe
Peter Olson
Mary B. Olson
Patricia Perkins
Brian Reis & Mary E. LaClair
Morley & Maureen Russell
Dan & Virginia Seymour
Terri Smialek
Marian Swenson
Patricia S. Vary
Lynne M. Waldeland

Patrons

Douglas Baker & Dana Stover
Michael & Elaine Bennett
Mary-Glynn & John Boies
Deborah & Colin Booth
Jo Burke
Natalie J. Calhoun
Norden Gilbert & Ben Thomas
Richard Grott
Dr. Anne C. Kaplan
Paul & Kit Kassel
Carol Luc
Beth & Harvey Plotnick
Darsha Primich &
Robert Fleisher
Catherine Raymond &
Alan Potkin
Sally Stevens
Promod & Anju Vohra
Christine Worley &
Peter J. Hood

Benefactors

Richard & Thecla Cooler
Larry & Carmeda Gregory
Jerry & Annette Johns
Richard & Kathleen Katz
John and Barbara Peters

Thank you for your continued support.

Membership renewal notices are not mailed. Please check if your membership card is expiring soon and renew today!

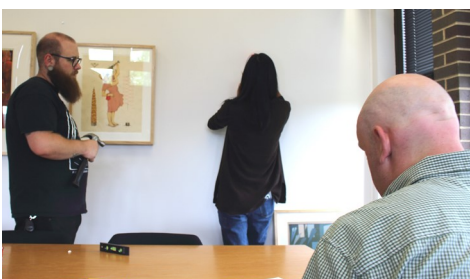


Donated Artworks Enliven Dean of the College of Visual and Performing Arts Paul Kassel's Office.

This Fall, the Art Museum's staff installed several works around campus from the Museum's Art to Lend program. This annual summer event allows university departments and individuals to enhance their private offices and administrative areas of the university by renting original works of art.

Dean **Paul Kassel** selected several works from the short exhibition to decorate his office. You can learn about the Art to Lend program by visiting our website here niu.edu/artmuseum/collection/art-to-lend.shtml.

The Art to Lend program enriches the University's welcoming nature for students, faculty and staff as well as brightens the experience for public visitors and provides daily enjoyment in the workplace. Each work meant for public display was carefully selected by museum staff for its broad appeal and its ability to be on loan for up to eight years. ■



Above: Paul Kassel works in his office under a painting and collage by former faculty member Ben Mahmoud. Left: Curator Peter Olson (seated) and Graduate Assistants Zach Bath (left) and Chris Kang (middle) make layout decisions while installing work in the office of the Dean.



BECOME A FRIEND!

Engage and benefit from a closer connection with the arts! Enjoy early-bird announcements, discounts, and members' only events. Take satisfaction in your vital commitment to support our exhibitions, programs and the preservation of our collection. Join Now!

If you are already a current member, please share this form with a friend. Thank you.

Friends Level

Individual \$25 / Dual \$45 (2 people, one address) / **Student \$10 / Senior \$15 / Dual Senior \$25** (2 seniors, one address)

Sponsor \$100

Choice of **one** Sponsor Collector Print Series:

Sidney Chafetz, *Public Servant*
 William Daley, *Untitled (sketches for ceramics)*
 David Driesbach, *The Pied Piper*
 Larry Gregory, *Conkles Hollow, Ohio*
 Peter Olson, *Hummingbird Nebula*
 Charlotte Rollman, *Hopkins Park, DeKalb*
 John Pitman Weber, *Distant Soweto*

Patron \$250

Choice of **one** Patron Collector Print Series:

Renie Adams, *Point of View*
 Michael Barnes, *Sideshow*
 David Driesbach, *Opening Night*
 Carl Hayano, *Sushi Trinitron*
 Ben Mahmoud, *Night Garden*

Benefactor \$500

Choice of **one** Benefactor Collector Print Series:

Susanne Doremus, *Sea Fall*
 Jay Ryan, *The Squadron on Patrol*

Membership Level Benefits

	Friend	Sponsor	Patron	Benefactor
Choice of one Friends of the NIU Art Museum premium	■	■	■	■
Priority registration and discounted fees on museum activities	■	■	■	■
Printed mailing of exhibition announcements	■	■	■	■
Special members-only previews, receptions, bus trips and special events	■	■	■	■
20% discount on NIU Art Museum catalogues	■	free	free	free
Subscription to <i>Museum Notes</i> members' newsletter	■	■	■	■
Recognition in <i>Museum Notes</i>		■	■	■
Name engraved on Membership Plaque in Museum			■	■
Private tour (options available)				■



YES! I want to **Join** **Renew** at the indicated level below: *Students and Seniors please enclose copy of current I.D.*

Individual \$25 / Dual \$45 (2 people, one address) / Student \$10 / Senior \$15 / Dual Senior \$25 (2 seniors, one address)

Sponsor \$100 Patron \$250 Benefactor \$500 I would like to help with an additional donation of \$ _____.

Please keep my premium and use my entire gift for programming and collection care.

Premium Selection _____ Print Series Selection _____

Name _____

E-mail _____

Address _____

Payment

Check enclosed payable to NIU Art Museum for \$ _____.

City _____ State _____ ZIP _____

Please charge: Visa Mastercard Discover Amer Exp Expiration _____

Phone _____ Mobile _____

Account number _____

I am interested in volunteering for:

Baking/Receptions Housing artists/scholars overnight Gallery Attendant/Information Desk Researching Get-On-The-Bus Trips Other _____

Serving on an Advisory Panels: (Area of Interest: Events Fundraiser Education/Outreach Exhibitions Collections)

Collection Spotlight



Jack Arends: Namesake for the Visual Arts Building
Untitled, n.d. Fiber Weaving
Jack Arends (American b.1911 d.1986)

The Art Museum collection contains this woven wall hanging by Jack Arends, a former chair of the Art Department and namesake for the School of Art and Design's Visual Arts building. The geometric, non-objective composition and its vibrant color scheme are reminiscent of the late 1960s and early 1970s era when Arends was at NIU as the chair. The work hung for many years in the School of Art and Design's administrative offices before being gifted to the NIU Art Museum's collection.

Continued page 3.

Untitled, n.d. Fiber weaving (37 x 23 in.). NIU Art Museum Collection. 1981.43A. Gift of the artist.

Serving Campus and Community by Balancing Traditional and Contemporary Art to Explore the Connections Made through Visual Culture.

The NIU Art Museum is located at the First Floor, West End of Altgeld Hall, on the corner of College Avenue and Castle Drives on the main campus of Northern Illinois University in DeKalb, IL.

The exhibitions and programs of the NIU Art Museum are sponsored in part by the Illinois Arts Council Agency; the Friends of the NIU Art Museum; and the College of Visual and Performing Arts' Season Presenting Sponsor Shaw Media.



NORTHERN ILLINOIS UNIVERSITY
College of Visual and Performing Arts

2018 - 2019 Season Performances Presented By
SHAW MEDIA
est. 1951

Transparency Suite
November 16, 2018 - February 15, 2019
Public Opening Reception
Thursday, November 15
5 – 7 p.m., NIU Art Museum

Galleries closed during University Holidays
Thanksgiving break: November 21 - 26
Winter break: December 15 - January 14
The staff may be reached via phone and email, but appointments are encouraged.

NIU Art Museum
Altgeld Hall 116, First Floor, West End
1425 W. Lincoln Hwy.
Northern Illinois University
DeKalb, Illinois 60115
815-753-1936
Gallery Hours:
Tu, W, F 10 a.m. - 5 p.m.; Th Noon - 7 p.m.;
Sun Noon - 4 p.m.; and by appointment for group tours.
niu.edu/artmuseum

