



Museum Notes

A Publication for Members of the NIU Art Museum

Become a
Friend of the
NIU Art Museum!

New Members

Fred Barnhart
Larry Ehrke

Renewals

Rivka and William Baker
Robert Banke
Joyce Barker
Elizabeth Bass
Michael and Elaine Bennett
Donna Benson
Gerald and Cheryl Brauer
Peggy Burke and Ed Wietecha
Mary Burns
Richard M. and Thecla Cooler
Joanne Dillman
Robert Fleisher and Darsha Primich
Richard F. Grott
Stephen and Deborah Haliczner
Lee S. Holt
Barbara Hulseberg
Jerry and Annette Johns
Anne C. Kaplan
Paul and Katherine Kassel
Ronald G. Klein
Charles Larry and Emmylou Studier
Sheila McHugh
Frances Moon
Dianne and James Moss
Juliann K. Olsen
Linda Oster
Patricia Perkins
Linda T. Peterson
Caroline M. Quinlan
Catherine Raymond and Alan Potkin
Rich Rice and John Calimee
Diane Rodgers
Michael and Robin Rothamer
Maureen and Morley Russell
Dan and Virginia Seymour
Terri Smialek
Beverly A. Smith
Sally Stevens
Johanna and Philip Vandrey
Lynne Waldeland
Jerrold and Carol Zar



Director's Notes:

"Something I can bring my granddaughter to..." When Barbara Cole Peters created a fund for the NIU Art Museum, she wanted us to be able to "educate, uplift and enlighten in a meaningful way." Her generous gift allowed us to present "Terrence A. Reese's Reflections: Intimate Portraits of Iconic African Americans" in 2017; explore several ideas that did not come together in 2018; discuss the possibility of re-relocating Steven Beyer's "Table of Six Questions" to a more prominent campus site where it could engage through student curriculum and community tours; and has now finally enabled us to host two exhibitions organized and traveled by the National Center for Children's Illustrated Literature in Abilene, Texas. With Barbara's base funding, we could ask several campus and local partners to join us in hosting top public programming related to these shows. We are very excited to present a virtual series of illustrated talks by children's book expert Leonard S. Marcus in mid-September and to welcome artist James E. Ransome and his wife, author Lesa Cline-Ransome to campus in mid-October (see program schedule on Page 4). The museum is delighted to also share the news that NIU will be the first Midwest satellite campus for artwork produced by Philadelphia's Brandywine Print Workshop and Archive, a diversity-driven printmaking studio dedicated to producing the work of underrepresented artists. Special thanks to those who donated auction items and made purchases at our silent auction to diversify the collection, to the support of CVPA Dean **Paul Kassel**, the NIU Art and Culture Fund, and to our Museum Exhibition Advisory Committee members Richard Siegesmund and Anne Edwards for helping this initiative get its start at NIU. We look forward to seeing as many of you as possible in the galleries this coming year.

Jo Burke

Inside this Issue

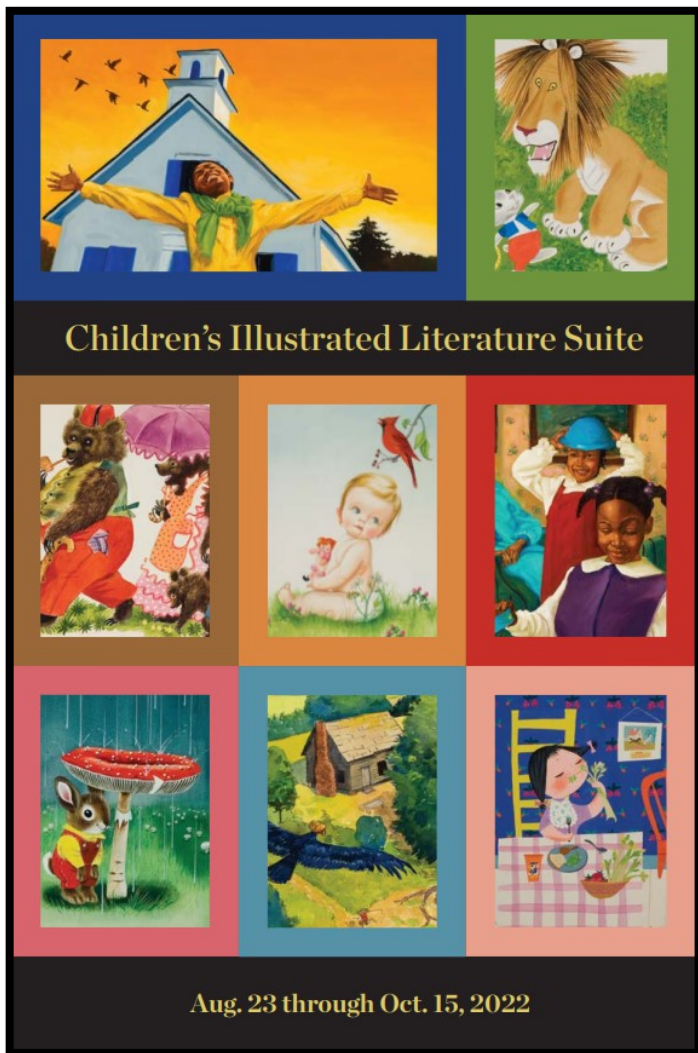
- Exhibitions 2**
- Museum News 3**
- Calendar 4**
- Support & Bus Trips 5**
- Membership Renewal 6**
- Sustaining Members 7**
- Collection Spotlight 8**

Subscribe to the museum's email announcements to stay informed between newsletters.

To sign-up, visit niu.edu/artmuseum/about/contact-us.shtml

Confirm your subscription by clicking the link in the confirmation email.

2. Exhibitions



Upcoming Exhibits

This winter, we are pleased to feature **Stories from My Childhood** which will be curated from a national artist open call for entry. This exhibit will feature stories of transformative or impactful events from artists' preteen years via an original work of art and accompanying text and will be open **Tuesday, Nov. 29 through Saturday, Dec. 10, 2022 and Tuesday, Jan. 17 through Friday, Feb. 17, 2023.**

This spring, we will again be working with the Center for Burma Studies (our rotation schedule was seriously altered by the COVID-19 closures) on exhibitions that explore various perspectives on collecting. **The Art of Collecting** will explore multiple stories of various encounters of Americans who had lived in Burma from the 1950s through the last couple of decades. Along with this, the museum will host **Local Visions II** featuring local art and artifact collections borrowed from members of the campus and the community. These exhibits will run from **Thursday, March 30 through Saturday, May 27, 2023.**

Help — Your Assistance is Needed

In preparation for our fall 2022 Children's Illustrated Literature Suite, we would like to borrow small-sized tables and chairs for reading setups in the gallery. If your grandchildren live far away or are getting a bit too big and you can lend us furniture for the period of Aug. 22 through Oct. 18, 2022, we would be most grateful. Please contact Jo, jburke2@niu.edu.

Fall 2022 Exhibitions:

Golden Legacy: Original Art from 80 Years of Golden Books

South Gallery

Everyday People: The Art of James E. Ransome

Rotunda Gallery

Both of these shows are organized and traveled by the National Center for Children's Illustrated Literature in Abilene, Texas.

Burnishing the Medals of Children's Literature

Hall Case Gallery

This exhibition has been organized by staff members of the NIU University Libraries.

Our Children's Illustrated Literature Suite was made possible by the Barbara Cole Peters Fund for the NIU Art Museum and will feature framed original artwork and books, some no longer in print.

The internationally acclaimed historian on children's books, Leonard S. Marcus served as co-curator for **Golden Legacy**. His "Golden Legacy: How Golden Books Won Children's Hearts, Changed Publishing Forever, and Became an American Icon Along the Way" was the impetus for this exhibition in 2007. It has since been updated with newer illustrators of some of the older classics and will feature a wide-ranging selection of original illustration art by Richard Scarry, Garth Williams, Tibor Gergely, Feodor Rojankovsky, Eloise Wilkin, Alice and Martin Provensen, Leonard Weisgard, Mary Blair and more.

Everyday People is clustered in books about the land, books about famous people, books about family, and classic story retellings. James E. Ransome has illustrated over 60 picture books and is the recipient of the 2018 Coretta Scott King Illustrator Honor for "Before She Was Harriet." His books have included the stories of Sojourner Truth, Frederick Douglass, Satchel Paige, Louis Armstrong, the Alvin Ailey Dancers, as well as stories of the use of quilts along the freedom trail and the fight to win access to the ballot box. He is a frequent collaborator with his wife, author Lesa Cline-Ransome, whom he met while both were students at Pratt Institute of Art.

In addition we will be showing **Burnishing the Medals of Children's Literature**. This exhibit celebrates award-winning children's books that honor the frequently forgotten, acknowledge the experience of the traditionally marginalized, and ignite curiosity and empathy in young readers. These works embody an inclusive vision of children's literature that both nourishes the self and expands a vision of the world.

Museum Staff

Jo Burke, Director
 Peter Olson, Assistant Director
 Shelby Holtz, Program Assistant

Extra Help Preparators

Millicent Kennedy
 Brock McCord


Museum Assistants

Rory Bis-Markel
 Danielle Lee
 Grace Sniegowski

Exhibition Advisory Committee

Michael Bennett
 Mary-Glynn Boies
 Jessica Cima
 Anne Edwards
 Aleksandra Giza
 Nina Rizzo
 Richard Siegesmund
 Peter Van Ael
 Johnson Kwame Wor

Visit niu.edu/artmuseum
 Phone: 815-753-1936
 Email: artmuseum@niu.edu
 E-news: go.niu.edu/artmuseum-enews

 Friend us on Facebook

 Follow us on Twitter
 @NIUArtmuseum

Parking is available in the [Visitor Pay Lot](#) located at 200 Carroll Avenue. Limited metered and accessible parking spaces are available in front of Lowden Hall with accessible aisles and route to Altgeld Hall. Campus parking is free on weekends and after 5 p.m. weeknights in nearby Lots 3 and 14.

To request disability-related accommodations for museum programs, please contact the museum at least one week in advance. Northern Illinois University is an equal opportunity/affirmative action institution.

CVPA Arts Newsletter

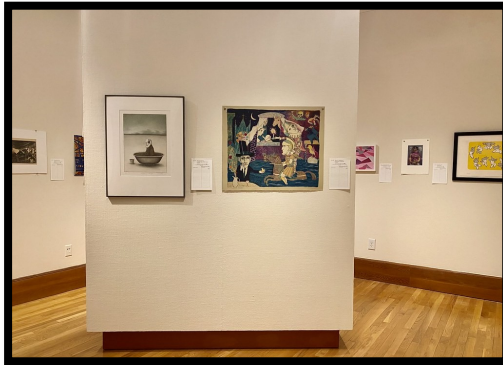
niuarts.com/newsletter-opt-in/

Arts Blog

niuarts.com/

Staff Announcements

The Art Museum has recently hired Shelby Holtz as our new program assistant. She is from St. Charles, Illinois and is an alumna of NIU, receiving her B.A. in history with an anthropology minor, and her M.A. in U.S. history with a public history concentration as well as a museum studies certificate. She was also the 2021 Museum Studies Student of the Year. Welcome Shelby!



Results of the Silent Auction

The Art Museum recently hosted a silent auction to diversify the collection from April 5 through May 6, 2022. Much of the artwork for auction was generously donated by faculty and staff here on campus. At the conclusion of the auction, the Art Museum has successfully raised over \$4,100. This money, along with funds from the NIU Art and Culture fee will be used to purchase prints made by Black, Latinx, Asian and Indigenous artists from the Brandywine Print Workshop and Archives.

COVID-19 Visitor Updates

Please check <https://www.niu.edu/protecting-the-pack/index.shtml> for the latest protocols and guidelines.

Artwork From our Collection Recently Featured on the Cover of the “New Ohio Review”

The “New Ohio Review” is a national literary journal produced by the creative writing program at Ohio University showcasing a variety of genres and writing styles. The cover of Issue 30, published in winter 2022 features Peter Dean’s 1984 lithograph “Summer Interior,” donated to the NIU Art Museum by Jeanne M. Weislow.

The Chicago art collector Weislow donated a collection of prints from the Landfall Press printmaking workshop in Chicago in the mid-1980s that were created as a collaboration between artists and master printer Jack Lemon. Dean was an expressionist figurative painter whose work often dealt with death and politics. Many of his paintings feature swirling compositions, vibrant colors and figures wearing masks or elaborate costumes. Dean co-founded Rhino Horn, a movement meant to break away from abstractionism. ■



4. Calendar

Virtual Illustrated Lecture Series Presented by Children's Book Scholar Leonard S. Marcus



Photograph by Sonja Sones

Wednesday, Sept. 14 — Virtual Event

Golden Legacy: The Story of the Golden Books

In this richly illustrated presentation, renowned children's book scholar Leonard S. Marcus tells the story of the upstart visionaries who brought together top-flight authors and artists, state-of-the-art printing technology, and savvy marketing to make Golden Books one of America's most trusted and treasured brands.

5-6 p.m. CT; Zoom livestream.

Thursday, Sept. 15 — Virtual Event

Strong Women, Great Books: The Women Who Invented American Children's Book Publishing

Leonard tells the little-known story of tenacious behind-the-scenes female pioneers who seized the day by providing the editorial version for such classics while also carving out an essential place for themselves in a historically male-dominated profession.

5-6 p.m. CT; Zoom livestream.

Sunday, Sept. 18 — Virtual Event

Around the World in 80 Picture Books

Including New York, Beijing, Bratislava and Mexico City, the illustrated children's book has become a vibrant global enterprise. Illustrated talk by Leonard S. Marcus.

2-3 p.m. CT; Zoom livestream.

Saturday, Sept. 24

Children's Day — Reading and Illustrating Celebrating the Books on Display

Led by NIU students in the School of Art and Design and the College of Education.

Details under development.

Preregistration required.

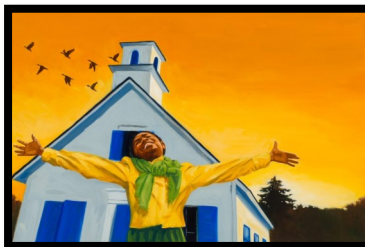
Images courtesy of the artists
and Penguin Random House.



"The Little Red Hen" (1954) by Elizabeth Orton Jones. Illustrated by J.P. Miller.



"Germs: Fact and Fiction, Friends and Foes" (2017) by Lesa Cline-Ransome. Illustrated by James E. Ransome.



"Under the Quilt of Night" (2002) by Deborah Hopkinson. Illustrated by James E. Ransome.



"The Lion's Paw" (1959) by Jane Werner Watson. Illustrated by Gustaf Tenggren.



"Aunt Flossie's Hats (And Crab Cakes Later)" (1991) by Elizabeth Fitzgerald Howard. Illustrated by James E. Ransome.

Artist and Author Talks with James E. Ransome and Lesa Cline-Ransome



Photograph by John Halpern

Wednesday, Oct. 12 — In Person

A Book, A Page, A World: The Artistic Journey of Lesa Cline-Ransome and James Ransome

Collaborators in life and work, Lesa and James share their early beginnings as author and illustrator, the creative process from idea to revision and how they navigate the business of writing and illustrating books for children.

7-8 p.m., Altgeld Hall 125.

Thursday, Oct. 13 — In Person

A Harmony of Pictures and Words

With his 30-year career as a children's book illustrator, James Ransome will examine how pictures are worth a thousand words. Illustrations are not just pretty pictures; they are an essential part of storytelling. His presentation will take you on a journey that shares how illustrations communicate with words to make a wonderful marriage.

6-7 p.m., Altgeld Hall 125.

Thursday, Oct. 13 — Private
Classroom Talks

Stepping into the Studio: A Visit with Illustrator James Ransome

James will be meeting privately with a beginner illustration class in the School of Art and Design and with a literacy class in the College of Education. He will be guiding a behind-the-scenes look into his studio and step-by-step process of creating his illustrations.

Saturday, Oct. 15

Closing Reception, 1-3 p.m.

Informal artist talk by James E. Ransome,
2 p.m., NIU Art Museum Rotunda Gallery.

Public programs are subject to change, addition and cancellation. Visit online for latest programming details and to register for virtual events, niu.edu/artmuseum/events.

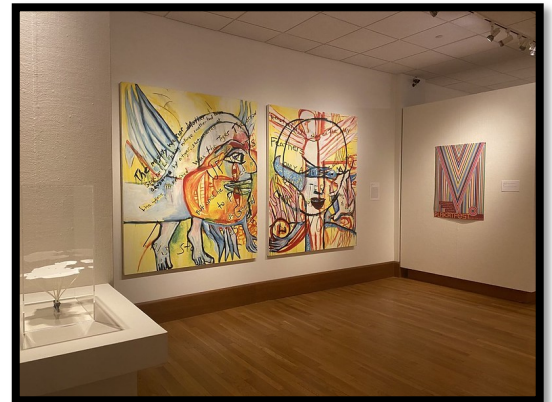
Thank You!

Thanks to the staff, students and community volunteers working with the Center for Burma Studies for an excellent and professional job on the installation, deinstallation and public programs they worked on in relation to the fall 2021 exhibit **"The Art of Surviving: The Journey of the Karen Refugees in Illinois."** Thank you to Carmin Berchiolly, Karla Findley, Arkar Kyaw, John Hosta, Chit Wityi Oo, and Professor **Catherine Raymond**, director for the center and curator for the Burma Art Collection at NIU. Thanks to the staff at the Center for Southeast Asian Studies for their technical and marketing support.



Thank you as well to the NIU faculty, staff and graduate students who generously gave their time and expertise for the public programming related to **"Refuge and Refugee."** Our thanks to Tony Delfiaccio and Andy Dolan; and **Sophia Varcados** of NIU Marketing and Communications for their patience, talent and skills; Anthropology M.A. candidate Saidouri Zomaya; Professor Abu Bah, Department of Sociology; Professor Heide Fehrenbach, Department of History; and Associate Professor Laura Heideman, Departments of Sociology and Nonprofit and NGO Studies for sharing their expertise; and thanks to artists Yolanda Del Amo, Ramapo College, Mahwah, New Jersey, and Eddy A. López, Bucknell University, Lewisburg, Pennsylvania for sharing their insights.

Thank you to the NIU School of Art and Design faculty for loaning their artwork for the extended spring 2022 faculty biennial show. Our thanks to **Michael Barnes**, Wes Beeler, Sasha Bitzer, Todd Buck, Amy Fleming, Billie Giese, Aleksandra Giza, Cynthia Hellyer Heinz, Joseph A. Insley, Jim Kearns, Jessica Labatte, Kimberly Martens, Helen Nagata, Jamie Obermeier, Heriberto Ponce, **Catherine Raymond**, Mike Rea, Nina Rizzo, Stephanie Sailer, John Siblik, Geoffrey Todd Smith, **Kryssi Staikidis**, Perrin Stamatis, Ben Stone, Frank Trankina, Peter Van Ael, Amanda VanValkenburg, and Shei-Chau Wang. Special thanks to **Catherine Raymond**, Peter Van Ael and the division of Art Education and Design for getting us open and staffed.



Donor Generosity

Thanks to an anonymous donor from among our friends, the NIU Art Museum will for the first time be able to provide award money for the upcoming national call for entry for its exhibition "Stories from My Childhood" to be on display in spring, 2023. The donor is paying for \$2,000 in prize money, \$600 for award juror fees, and \$1,400 for miscellaneous museum expenses related to the exhibition. We are excited to see the impact that offering awards will have on the reach of our call.

IACA Grant

We are very pleased to announce that we have received a general operating support grant of \$8,900 from the Illinois Arts Council Agency for exhibitions, programs and operations during FY2022.

Volunteers

The museum would like to thank **Robert Banke** and **Gary Burchett** for their continued support.

Bus Trips – Save the Dates!

Thursday, **July 28**

9 a.m. – 4 p.m.

Nick Cave: Forothermore
Museum of Contemporary Art

\$\$\$

Thursday, **August 4**

9 a.m. – 4 p.m.

Cezanne
Art Institute of Chicago

\$\$\$

Sunday, **August 28**

9 a.m. – 8 p.m.

Reopening
Stanley Museum of Art
Iowa City, Iowa

\$\$\$



JOIN

All gifts sustain and grow opportunities for enrichment and engagement that are free and open to all. Take satisfaction knowing your vital commitment supports our exhibitions, programs and the preservation of our permanent collection.

Membership Levels

Benefactor \$500

Patron \$250

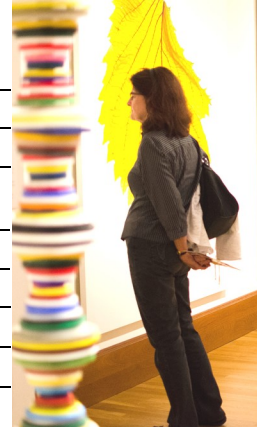
Sponsor \$100

Friend

Individual \$25 Dual \$45
Senior \$15 Dual \$25
Student \$10

Benefits

	Benefactor	Patron	Sponsor	Friend
Choice of one "Friend" premium.	■	■	■	■
Priority registration and discounted activity fees.	■	■	■	■
Printed mailing of exhibition announcements.	■	■	■	■
Special members-only previews, receptions, bus trips and special events.	■	■	■	■
20% discount on NIU Art Museum catalogues.	free	free	free	■
Subscription to "Museum Notes" newsletter.	■	■	■	■
Recognition in "Museum Notes."	■	■	■	■
Name engraved on membership plaque.	■	■	■	■
Private personal tour (options available).	■	■	■	■



Premiums

Friend Choice of: Travel mug, ceramic mug or T-shirt*. (Additional \$5 for student/senior levels.)

Benefactor

Choice of **one** Benefactor Collector Print

Susanne Doremus, "Sea Fall"
Jay Ryan, "The Squadron on Patrol"

Patron

Choice of **one** Patron Collector Print

Renie Adams, "Point of View"
Michael Barnes, "Sideshow"
David Driesbach, "Opening Night"
Carl Hayano, "Sushi Trinitron"
Ben Mahmoud, "Night Garden"

Sponsor

Choice of **one** Sponsor Collector Print

Sidney Chafetz, "Public Servant"
William Daley, "Untitled"
David Driesbach, "The Pied Piper"
Larry Gregory, "Conkles Hollow, Ohio"
Charlotte Rollman, "Hopkins Park"
John Pitman Weber, "Distant Soweto"

*Subject to print availability.

Membership

YES! I want to **Join** **Renew** at the indicated level below: *Students and Seniors please enclose copy of current I.D.*

Benefactor \$500 **Patron \$250** **Sponsor \$100**

Friend select one

Individual \$25 Dual \$45 (2 members one household)
 Senior \$15 Dual Senior \$25
 Student \$10

I would like to help with an additional donation of \$ _____.

Premiums - make checks payable to NIU.

Premium Selection _____ Print Series Selection _____

Charitable Donation - make checks payable to NIU Foundation.

Please keep my premium. Use my entire gift for exhibitions, programming and collection care by making a charitable donation through the NIU Foundation.

Name _____

Payment

Check enclosed \$ _____.

Address _____

Please charge: Visa Mastercard Discover Amer Exp Expiration _____

City _____ State _____ ZIP _____

Account number _____

Phone _____ Mobile _____

Name on card _____

Email _____

Signature _____

I am interested in volunteering for:

Baking/Receptions Housing artists/scholars overnight Gallery Attendant/Information Desk Researching Get-On-The-Bus Trips Other _____
Serving on an Advisory Panels: (Area of Interest: Events Fundraiser Education/Outreach Exhibitions Collections)

If you are already a current member, please share this form with a friend. Thank you.

Members**Friends**

Rivka and William Baker
 Robert Banke
 Katharina Barbe and Wendell Johnson
 Joyce Barker
 Elizabeth Bass
 Rudolf and Ingeborg Bisanz
 Donna Benson
 Pat Burke and John Van Vranken
 Mary Burns
 George and Mary Cella
 Gary and Dee Coover
 Herb Deutsch
 Jan Devore
 Joanne Dillman
 Kathy DiMonte
 Larry Ehrke
 Brian and Linda Fulton
 Patricia Galvan
 David and Linda Groat
 Daniel and Nancy Grych
 Jitka Hurych
 Beth and Pat Ingram
 Charles Larry and Emmylou Studier
 John and Sandy Lyon
 Patsy Lundberg
 Sheila McHugh
 Frances Moon
 Charles and Gretchen Moore
 Juliann K. Olsen
 Linda Oster
 Linda T. Peterson
 Caroline Quinlan
 Rich Rice and John Calimee
 Michael and Robin Rothamer
 Bill and Kathy Scarpaci
 Linda L. Schwarz
 Ivan and Judith Shils
 Beverly A. Smith
 Jerry and Ging Smith
 Phillip and Johanna Vandrey
 Sophia Varcados
 Mary Von Zellen and James Nerstheimer
 Jerrold and Carol Zar

Sustaining Members**Sponsors**

Fred Barnhart
 Colin and Deborah Booth
 Peggy Burke and Ed Wietecha
 Susan Carter and Robert Sabin
 Stephen and Deborah Haliczzer
 Barbara Hulseberg
 Steven A. Johnson
 Ronald G. Klein
 Sandra and Howard Little
 Jerry and Miriam Meyer
 Diane and James Moss
 Nicholas Noe
 Peter Olson
 Patricia Perkins
 Diane Rodgers
 Morley and Maureen Russell
 Dan and Virginia Seymour
 Terri Smialek
 Marian Swenson
 Ruth Anne Tobias
 Patricia S. Vary
 Lynne Waldeland
 Christine Worley and Peter Hood

Patrons

Michael Barnes and Kryssi Staikidis
 Michael and Elaine Bennett
 Derryl Block
 Jo Burke
 Patricia and Stephen Faivre
 Robert Fleisher and Darsha Primich
 Norden Gilbert and Ben Thomas
 Richard F. Grott
 Thom and Carol Ann Kapheim
 Carol Luc
 Brian Reis and Mary LaClair
 Sally Stevens
 Christo R. Watson

Benefactors

Gerald and Cheryl Brauer
 Richard and Thecla Cooler
 Lee S. Holt
 Jerry and Annette Johns
 Anne C. Kaplan
 Paul and Katherine Kassel
 Richard and Kathleen Katz
 Mary Lincoln
 Catherine Raymond and Alan Potkin

The support the museum receives through your financial gifts and your enthusiasm for the museum allows us to produce award-winning exhibitions and programs for the university, DeKalb and beyond.

Thank you for your generosity and support.

Membership Renewals

Membership renewal notices are not mailed. Please check if your membership card is expiring soon and renew *today!*

Change of Address

Notify the Museum if you have moved to ensure that you continue to receive issues of the Museum Notes newsletter.



For those wishing to make certain of our future, please consider donating to the Friends of the NIU Art Museum Endowment Fund care of the DeKalb County Community Foundation dekalbccf.org.

8. Collection Spotlight

Untitled

Gail Skudera

Gail Skudera received her BFA in Weaving and Textile Printing in 1975 and MFA in Fiber Arts in 1981 from NIU. As a student at NIU, Skudera was a graduate assistant for the Art Museum when it was located in the Swen Parson Gallery. Since earning her degrees, Skudera has continued to create and exhibit her work both nationally and internationally. She uses woven mixed media often centered around the relationships between people, the environment and the passage of time. The artist's drawings and paintings are often cut into strips and rewoven, as is implied by the underlying grid structure in this untitled drawing. A sense of balance and stability comes from the regularly and evenly divided squares; yet there is personality in the patterned marks of the artist's hand.



Gail Skudera. *Untitled*, 1984. Drawing on Fabriano Paper, (18 x 18 in.). NIU Art Museum Collection 2020.5. Gift of Drs. Alan Ara Boghosian and Karen Frye-Boghosian.

Serving Campus and Community by Balancing Traditional and Contemporary Art to Explore the Connections Made through Visual Culture.

The exhibitions and programs of the NIU Art Museum are sponsored in part by the Illinois Arts Council Agency, the Friends of the NIU Art Museum, the NIU Arts and Culture Fee; and the College of Visual and Performing Arts' Season Presenting Sponsor Shaw Media. Additional funding for the programs related to our Fall 2022 shows came from the Barbara Cole Peters Fund for the NIU Art Museum; Friends of the University Libraries, Friends of the DeKalb and Sycamore Public Libraries; the Jerry L. Johns Literacy Clinic; NIU Center for Black Studies; NIU Gender and Sexuality Resource Center; NIU College of Education; NIU Office of Diversity, Equity and Inclusion, the illustration department of the NIU School of Art and Design; and the College of Visual and Performing Arts DEI Initiative.



College of Education
Jerry L. Johns Literacy Clinic
Center for Black Studies
College of Visual and Performing Arts
Academic Diversity, Equity and Inclusion
Gender and Sexuality Resource Center



Gallery Hours
10 a.m. to 1 p.m., Tuesday, Wednesday
Noon to 6 p.m., Thursday, Friday
Noon to 3 p.m., Saturday
Also by appointment for group tours. Closed
university holidays and between exhibitions.

NIU Art Museum
Aitgeld Hall 116, First Floor West End
1425 W. Lincoln Hwy.
Northern Illinois University
DeKalb, Illinois 60115
815-753-1936
niu.edu/artmuseum

