



Museum Notes

A Publication for Members of the NIU Art Museum

Welcome to our Newest Members!

New Members

Mavis &
Michael Eckman
Linda Oster

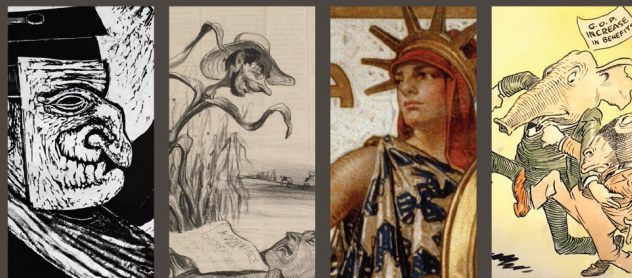
Renewals

Doug Baker &
Dana Stover
Michael &
Elaine Bennett
Mary Glynn &
John Boies
Natalie Calhoun
Richard &
Thecla Cooler
Stacey Deegan
Janis FitzHenry
Richard F. Grott
Jerry & Annette Johns
Steven A. Johnson
Ronald G. Klein
Jerry & Donna Leonard
Marilyn Loy
Elizabeth Mehren &
Joe Shapera
Mary B. Olson
Sherry Patterson
Darsha Primich &
Robert J. Fleisher
Diane Rodgers
Bill & Kathy Scarpaci
Terri Smialek
Marian Swenson
Jerrold & Carol Zar
Norma Zopp

The support the Museum receives through your financial gifts and your enthusiasm for the Museum allows us to produce award winning exhibitions and programs for the University, DeKalb community, and beyond.

**Join Today!
Become a Friend of the
NIU Art Museum!**

NIU ART MUSEUM



The Spring 2017 Exhibition Suite explores the nuanced ways artists respond to their social and political landscapes using visual language and hyperbole to critique, valorize and satirize the events and subjects of their times—often making us grimace and laugh in the process.

Hand in Hand

The Visual Arts as a Means of Social and Political Propaganda, Protest and Commentary.

March 28 – May 20, 2017

***“What a Frightful Spectacle!”:
Lithographs of Honoré Daumier***

This exhibition surveys Daumier's life's work of satirical observations of aristocrats, politicians and the 'average Joe' caught up in the tumultuous civic transformations of 19th century Paris.

Honoré Daumier spent a long career, from around 1830 until the 1870s, drawing nearly 4,000 illustrations for satirical Parisian journals *Le Caricature* and *La Charivari*, both published by Daumier's lifelong collaborator Charles Philipon. Daumier produced lithographs that satirized society, the bourgeoisie, political corruption and even King Louis-Philippe which led to his brief imprisonment in 1832.



In this illustration detail, an anthropomorphic stalk of sugar cane berates a rather defeated-looking sugar beet. Several days before this editorial cartoon appeared in the newspaper, France passed a law drastically reducing the tariffs on sugar cane imported from French colonies. Considered a blow to European-grown sugar beets—represented by the knocked-down beet—the laws were seen at the time to be politically motivated.

Inside this Issue

- Exhibitions cont. 2**
- Museum News 3**
- Events Calendar 4**
- Get-on-the-Bus Trips 5**
- Volunteers / Sponsors 6**
- Membership Renewal 7**
- Community Input 8**

Subscribe to the museum's email announcements to stay informed between newsletters.

To sign-up, visit www.niu.edu/artmuseum/contactus.

Confirm your subscription by clicking the link in the confirmation email.



Illustrated here is the woodcut Plakart, depicting Chafetz's fictional professor Harley Quinn—a play on the masked comedic Harlequin character—who wields paintbrushes instead of the typical wooden sword or magic wand. The text is a pun on the names of two 19th-century French academic painters, Jean Auguste Dominique Ingres and William-Adolphe Bouguereau. While Ingres was well respected throughout his career, Bouguereau was criticized for his formulaic paintings in which eroticism masqueraded as high art.



Continued from *Hand in Hand* page 1...

Afterward, Daumier traded political commentary for social satire, as human foibles were also a bottomless source of inspiration.

Daumier worked in series and his topics ranged from *Actualities* (News of the Day), *Professeurs et Moutards* (Teachers

and Students), *Les Gens de Justice* (Lawyers and Judges), *Bas Bleu* (Liberated Women) and *Bons Bourgeois* (The Sedentary Middle Class). This exhibition includes examples of his early political satire, social commentary and finally a return to political satire under a different regime many years later.

Theoretical Mockery: Satirical Prints by Sidney Chafetz

Sidney Chafetz's prints often incorporated puns, jokes, and humor to satirize subjects from current political events and his life on a Midwestern college campus. Chafetz was a well-known artist, leading the printmaking program at Ohio State University.

For Chafetz, being an artist meant, "using satire to stab at pomposity, whether in my own field of academe or in our political world." His tools were the traditional

printmaking media of woodcut and etching, used in a deceptively simple and direct manner—with powerful graphic results.

Chafetz prints can be found in the collections of the National Woodblock Institute of Tokyo, Japan, the Library of Congress, the Museum of Modern Art, the Philadelphia Museum of Art, and the Columbus Museum of Art in Ohio.

Over the Top to Victory!

Exploring government-sponsored posters issued during the First World War, this exhibition contrasts the social satire seen in the other exhibitions with propaganda images from the early 20th century. The visual language used in these posters communicates a view of patriotism, national identity, and heroism to dramatic effect.

Without television or internet, the war-time posters of the period relied on the accomplished illustrators of the

burgeoning commercial advertising field as well as professional artists to produce compelling and persuasive images to motivate an entire country behind the war effort. The various subjects and wide-ranging styles give a glimpse into the visual landscape of the American home front during World War I. This exhibition includes popular posters illustrated by well-known artists and illustrators of the time including James Montgomery Flagg, Joseph C. Leyendecker, Sidney H. Rosenberg, and William Henry Coffin.

A Tale of Donkeys and Elephants; Satire with the Wink of a Fox

Political cartoons are part and parcel of the American experience that have been used since colonial times to succinctly express, in visual form, differing points of view on complex socio-political concerns. Using a variety of illustrative devices and mediums, political cartoons comment on current events, personalities, and issues in hopes of influencing the populace's opinion and action.

A Tale of Donkeys and Elephants; Satire with the Wink of a Fox explores selected chapters in the United States' history as reflected in political cartoons. It touches on the intricacies of presidential politics, social relations, economics, war, power, and national identity. Political cartoonists express their thoughts on historical events using the conventions of satire with the intent to expose the hypocrisies of those in power and shed light on the inherent complexities of the political landscape. ■

Museum Staff

Jo Burke, Director
 Peter Olson, Assistant Director
 Stuart W. Henn, Coordinator
 Marketing and Education

Graduate Assistants

Millicent Kennedy
 Charlie Newton
 Zeinab Saab

Museum Assistants

Jillian Allen
 Isabel Angulo
 Jamie Arntzen
 Tania Carlstrom
 Kelsey Duquette
 Samantha Jones
 Praneetha Kotla
 Lina Mauries
 Sarah O'Heron

Exhibition Advisory Committee

Michael Bennett
 Mary Glynn Boies
 Barbara Jaffee
 Nina Rizzo
 Diane Rodgers
 Peter Van Ael


Education Advisory Committee

Joshua Anderson
 Cynthia Hellyer-Heinz
 Kryssi Staikidis

If you are interested in joining the Museum's volunteers contact the Museum to share your talents!

Visit niu.edu/artmuseum
 Phone: 815-753-1936
 Email: artmuseum@niu.edu

Receive our email updates by visiting our website:
niu.edu/artmuseum/contactus.

 Friend us on Facebook

 Follow us on Twitter
 @NIUArtmuseum

Parking is available in the Carroll Ave Visitor's Pay Lot and metered spots in front of Altgeld Hall. Campus parking is free on weekends and after 5 p.m. weeknights.

Staff Announcements

Museum Director **Jo Burke** will be presented with the 2017 *Presidential Supportive Professional Staff Award for Excellence* in a ceremony in April. The Award of Excellence recognizes and honors four individuals who have made outstanding contributions to the university. The Award Ceremony and presentation will be Wednesday, April 12, in the Holmes Student Center Ballroom from 2 – 4 p.m. and is open to the public. Please join us in congratulating Jo!

MFA printmaking student **Millicent Kennedy** will have work next fall in a group show, *Bad Editions*, at Northeastern Illinois University curated by Rafael E. Vera from Loyola University.

Praneetha Kotla, MS in Management and Information Systems student, recently received the Outstanding MIS Graduate Student Award from the College of Business.

Charlie Newton, MFA painting student, will have his senior thesis show, *Dreams Are What You Wake Up From* in Gallery 214 in the School of Art and Design, Jack Arends Hall. His show opens Monday, April 3 with closing reception Thursday, April 6 from 6-8 p.m. Newton will graduate this May.

Diane Rodgers, Associate Professor of Sociology, recently appeared in the *NIU Northern Star's Best of DeKalb 2017* as the *Best Professor in DeKalb*. Voted by students, the "Best" rankings were tallied and appeared in a February insert in the university's student paper. Rodgers serves on the Art Museum's Exhibition Committee assisting with exhibition decisions and planning. Rodgers teaches courses on Social Theory and Contemporary Social Institutions. Congratulations Diane!

Zeinab Saab, MFA printmaking student, recently exhibited her work in two national shows. The first, at a solo show in Cleveland entitled *Rituals* at the Loftworks Gallery and the second, in a group show at the Arab American National Museum in Dearborn, Michigan. Saab was also recently accepted into the Artlink Gallery group show in Fort Wayne, Indiana for the 37th *Annual National Print Exhibition*. ■

The NIU Art Museum Receives Gift of Art

Generous donor and NIU alumnus Lee Holt (67) from California has donated portions of his art collection of prints, paintings, and drawings to the NIU Art Museum—25 pieces in total. Included in the gift were several pastels on paper by fellow NIU Alumnus Thom Kapheim (67). Other works from Holt's donation of art significantly added to the Art Museum's large holdings of prints by David Driesbach, a former printmaking professor in the School of Art at NIU. The gift also included prints and drawings by artists including: Paul Cezanne, Mauricio Lasansky, Hokusai, and Peter Max.

A few selected works from Holt's gift were recently hung in the Vice President of University Advancement and CEO of the NIU Foundation Catherine Squires' office. "The idea came with the notion that this is a great office—warm and with wonderful views of the campus and passing students. It has a vibrancy for alumni who meet with me that evokes memories of their time here and reminds them of what is special about NIU which is important in the process of giving back," Squires noted. She is grateful to be able to highlight the "spectacular generosity of donors and the exceptional talent of our current students and gifted alumni. The art work on display in my office helps tell that story and enhances the campus experience for visitors to my office."

This installation is made possible through the Art Museum's *Art to Lend*, an on-campus artwork rental program for secured areas and offices at the university. Interested parties may enroll in the program during our annual *Art to Lend* exhibition each summer. This year's annual selection period begins **July 10th and runs through July 14th** with the exhibition of eligible work at the Art Museum. More information on the program including our loan policy, fees and restrictions may be found on our website niu.edu/artmuseum/collections/art2lend.shtml. SH ■ *Photo on page 6.*

Collection Spotlight

Robert Middaugh was a Chicago-born artist who made quietly surreal and fantastic still life images in the vein of Giorgio de Chirico. Middaugh engaged with the history of still life painting through his meticulous rendering of scientific or unusually shaped glassware and the suggestion of alchemical processes.

Bittersweet Street showcases Middaugh's technical skill and his penchant for playfully metaphysical scenes. Here, a wagon made of an unidentifiable material formed into soft curves and gradually protruding shapes appears benevolently extraterrestrial in origin.

Within the unattended three-wheeled wagon sit six evenly placed bottles, each bottle filled with differing levels of opaque liquids. These glass bottles, a common object throughout Middaugh's works, are curiously parked outside of a storefront, the inside of which showcases in contrast with the smooth curvature of the bottles and wagon, jagged box-like forms whose purpose remains hidden. Though emptied or perhaps relieved of any human presence, the bottles in contrast with the boxes appear to have their own manner of silently relating to one another. CN ■ *Photo on page 6.*

Calendar of Events

Thursday, April 6

Public Reception

5 – 6:40 p.m., NIU Art Museum

Visual Commentary: The Art of American Political Cartoons

Lecture by Kerry Freedman, Professor and Division Head, Art + Design Education, NIU.

6:45-7:30 p.m., Altgeld Hall 315

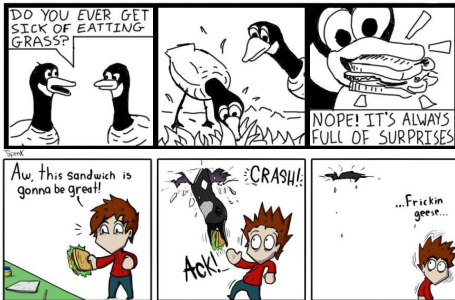
Saturday, April 8

Curators' Gallery Talk with Peter Olson, Museum Assistant Director and Graduate Assistant Millicent Kennedy. 1-2 p.m., Art Museum Galleries

Monday, April 10

Bite of the Print: A Medium Well Suited for Social Commentary

View prints from the collection with Museum Assistant Director Peter Olson. 2-3 p.m., Art Museum Galleries



Northern Star cartoonists Faith Mellenthin's *Don't Feed the Geese* and Jon Mitchell's *Spenk*.

Wednesday, April 12

Roundtable Discussion with the Northern Star Cartoonists

5-6 p.m., Altgeld Hall 315

Thursday, April 13

Docent Tour with the student curators of *A Tale of Donkeys and Elephants* noon-1 p.m., Art Museum Galleries

(RE)PRESENTING GUATEMALA

Thursday, April 13

Representing Revolutionary Campesino Politics in Guatemala's 1950 Huelga de Dolores

Matt Maletz, History Ph.D. Candidate, NIU

5-6 p.m., Latino Resource Center

Thursday, April 13

Daumier's France: Politics, Satire and Sociability

Lecture by NIU's Emma Kuby, Assistant Professor, Department of History and Brian Sandberg, Associate Professor, Department of History and Associate Dean of Research and Graduate Affairs for the College of Liberal Arts and Sciences.

6:15-7:30 p.m., Altgeld Hall 315

Wednesday, April 19

The Evolution of Editorial Cartooning: Changes in Media and Messages

Guest lecture by Dr. Edward Lordan, Professor, Department of Communication Studies, West Chester University, PA

5-6 p.m., Altgeld Hall 315



Saturday, April 22

Color Your Politics

Be an illustrator for an afternoon and color cartoons from the exhibition! All ages, children under 9 with supervision. Pre-registration required.

2-4 p.m., Art Museum Galleries

Monday, April 24

Eugene V. Debs and the Fight for Free Speech in World War One

Guest lecture by Ernest Freeberg, Distinguished Professor of Humanities, University of Tennessee. Presented by the NIU Department of History.

6-7 p.m., Altgeld Hall 315

Tuesday, April 25

Promoting Democracy: The Progressives, Women's Suffrage, and the Decline of the Political Machine

Lecture by Matthew J. Streb, Professor and Chair of the Department of Political Science.

5-6 p.m., Altgeld Hall 315

Thursday, April 27

Docent Tour with student curators of *A Tale of Donkeys and Elephants* noon-1 p.m., Art Museum Galleries



Open Late!

Saturday, May 6

Open Late for Artigras!

The annual NIU and DeKalb Celebration of the Arts. Visit niu.edu/artigras/ 12 – 6 p.m.

NIU ART MUSEUM

FRIENDS

Members' Private Event

Sunday, May 7

A Friends of the NIU Art Museum Member's Only Curator's Talk with Museum Assistant Director Peter Olson along with Francophile and independent researcher Rich Rice who will present *Goguettes, Goguetters, and Some Popular Verse in Daumier's Paris*.

Watch for your invitation by mail. Not a current Member? Join or renew now to attend!

Thursday, May 11

Curators' Gallery Talk with Peter Olson, Museum Assistant Director and Graduate Assistant Millicent Kennedy. noon-1 p.m., Art Museum Galleries

Thursday, May 11

The Partisan Duopoly in US House Elections: An Analysis of Minor Party Failure Lecture by Scot Schraufnagel, Associate Professor, Department of Political Science.

5-6 p.m., Altgeld Hall 315

For questions or more information on the events at the NIU Art Museum please phone 815-753-1936 or email the Education Coordinator at shenn1@niu.edu.

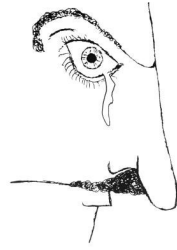
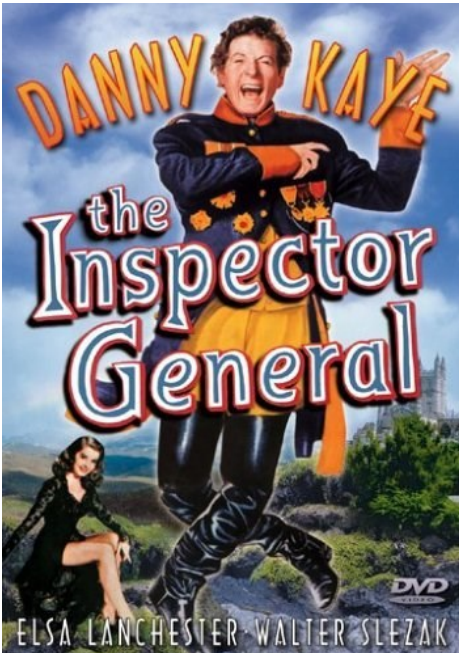


Thursday, May 18

Film Screening of *Inspector General*

Henry Koster's musical comedy starring Danny Kaye set in the period of the First French Empire follows a fool who is mistaken as an investigator in disguise by the town's corrupt officials. (1949, 100 minutes.) Doors open 6:30 p.m., screening 7-9 p.m., Egyptian Theatre, 135 N. Second St., DeKalb \$7 Adults, \$5 Members/Students.

Programs are subject to additions and changes. Please check our website for current information. ■



Wednesday, May 3

Vonnegut's *Odyssey* and the Ed Paschke Art Center

Enjoy a visit to the Polish Museum of America to view their permanent exhibitions and then visit *Vonnegut's Odyssey* at the National Veterans Art Museum. The exhibition explores the story of a veteran's return from combat through the artwork of

World War II veteran and famed author Kurt Vonnegut Jr. His illustrations of his post-war experience documents the process of returning home. We will also visit the Ed Paschke Art Center dedicated to this Polish-American and Chicago artist that serves as a place of creativity. Finally, dine at Smakosz, a family-owned Polish restaurant in the neighborhood. **RSVP by 3/27.**

Departure: 1 p.m. Expected Return: 8:30 p.m. Price: Museum Members \$20; Non-Member Adult \$30; Non-Member Student/Senior \$25. Ticket price includes transportation. Meals and incidentals not included.



Saturday, June 10, 2017

Friends of Friends co-sponsored Trip to Printers Row Lit Fest

The Friends of the DeKalb Public Library, The Friends of the University Libraries, and the Friends of the NIU Art Museum are coming together for a trip to Chicago's 32nd Annual Printers Row Lit Fest (formerly Printers Row Book Fair). This two-day

celebration of all things literary includes an outdoor book fair with over 200 booksellers from across the country displaying new, used and antiquarian books and a literature festival jam packed with readings, discussions and presentations by almost as many authors and publicists. The Printers Row Lit Fest takes place over five city blocks of historic Dearborn Avenue, between Congress and Polk. Plenty of food vendors and local eateries. Get up close to hear your favorite authors. The Printers Row Lit Fest is the largest free literary event in the Midwest drawing over 120,000 book-lovers to the two day celebration. Let's get a large group of our local bibliophiles together so we can get a big comfy bus! **RSVP by 5/23. Become a Member – Become a Friend - and help support your local and University Libraries and Art Museum.**

Departure: 8:30 a.m. Expected Return: 8:30 p.m. Price: Member of two or more Friends' Programs \$20; Member of one Friends' Program \$25; Non-Member \$30. Ticket price includes transportation. Meals and incidentals not included. Three pick up locations: Campus, DeKalb, and Fox Valley.



Above: Visiting Artist Pedro Rafaél González Chavajay comments on his work during a public gallery talk during the *VISIONES E HISTORIAS* exhibition.

Save the Date!

Sunday, September 10 – Friday, September 15, 2017

Paducah and Louisville, Kentucky Get-on-the-Bus OVERNIGHTER!

With stops in Mt. Vernon, Illinois and Columbus, New Harmony, and French Lick, Indiana. Arts and architecture highlights include: Cedarhurst Art Fair, National Quilt Museum, Richard Meier's Athenaeum, Philip Johnson's Roofless Church, the West Baden Springs Hotel ("8th Wonder of the World"), Columbus Moderns by Eliel and Eero Saarinen and the Miller House and Garden; the recently remodeled Speed Art Museum, Kentucky Museum of Art and Craft, a bit of bourbon and some Derby Pie. *Sign-up early if interested; Our overnight trips fill fast! Stay tuned! Pricing to come.* ■

Pre-registration and payment required for all Get-on-the-Bus excursions. To sign-up, please contact the NIU Art Museum by phoning 815-753-1936. Payment may be made with cash, check made out to NIU, or major credit card over the phone.

Our Volunteers

The Museum would like to extend a special thanks to the following volunteers and individuals for their continued support. **Michael Bennett** for framing and construction assistance. **Jitka Hurych** and **Terri Smialek** for their research and planning assistance on this season's bus trips.

The exhibitions and programs of the NIU Art Museum are sponsored in part by the Illinois Arts Council Agency; the Friends of the NIU Art Museum; and the Dean's Circle of the College of Visual and Performing Arts, NIU.

Additional Spring exhibition support provided by

Northern Illinois University's: Art History Division in the School of Art and Design; the Department of Communications; the Department of History; and the Interdisciplinary Certification of Graduate Study in Museum Studies and students in Art 656: Museum Exhibitions and Interpretation course with Instructor Peter Van Ael.

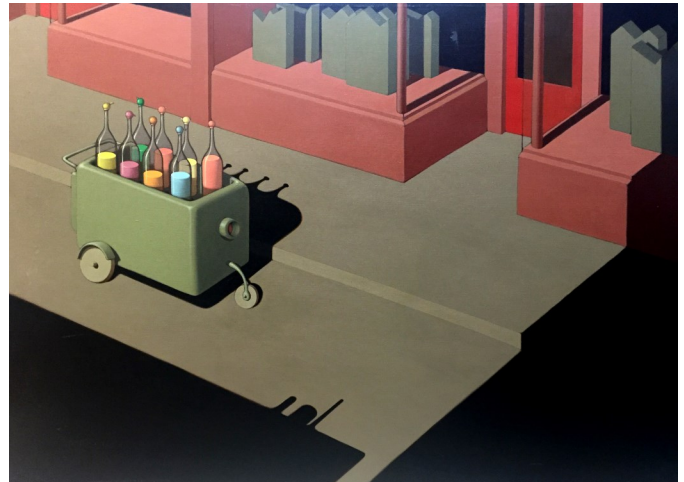
Artwork and objects for the exhibitions are on loan from

The Benjamin Harrison Presidential Site; Billy Ireland Cartoon Library & Museum; Colonel Robert R. McCormick Research Center at the First Division Museum; the Geneva History Museum; the Library of Congress; the Mary and Leigh Block Museum of Art, Northwestern University; Midway Village Museum; Northern Illinois University Founders Memorial Library's Regional History Center and University Archive Collections and the Rare Books and Special Collections; the NIU Art Museum Collection; and private lenders:

Michael Barnes & Kryssi Staikidis; David & Sarojini Johnson; **Pete Olson & Janean Koebbe**; Endi Poscovic; Peter Van Ael; and Jacqueline Vossler.

A Tale of Donkeys and Elephants; Satire with the Wink of a Fox

Northern Illinois University's Interdisciplinary Certification of Graduate Study in Museum Studies students in Art 656: Museum Exhibitions and Interpretation curated this exhibition with Instructor Peter Van Ael. Students included: Zachary Bishop, Amy Caponigro, **Millicent Kennedy**, Victoria Likeum, Hannah Palsa, Zheng Zhong, and Anna-Marie Zurlinden. ■



Above: Robert Middaugh, *Bittersweet Street*, 1979. Oil on canvas, (54 1/4" x 40 1/2"). NIU Art Museum Collection.

Sponsor Members

Michael Barnes
Rudolf and
Ingeborg M. Bisanz
Colin and Deborah Booth
Peggy Burke and
Ed Wietecha
John and Nancy Castle
Susan Carter and
Robert Sabin
Edward and
Donna Flanagan
Stephen and
Deborah Haliczzer
Stuart W. Henn
Steven A. Johnson
Ronald G. Klein
Jerry and Miriam Meyer
William and
Josephine Monat
Nicholas Noe
Mary Olson
Pete Olson and
Janean Koebbe
Mary Quinlan-McGrath
Brian Reis and
Mary E. LaClair
Patricia Perkins
Anne Rubendall
Maureen and
Morley Russell
Dan and Virginia Seymour
Terri Smialek
Sharon Tourville
Patricia Vary
Lynne Waldeland
Christine A. Worley and
Peter Hood

Patron Members

Doug Baker and
Dana Stover
Michael and
Elaine Bennett
Mary Glynn and John Boies
Jo Burke
Natalie Calhoun
Richard and Thecla Cooler
Christa Even*
Darsha Primich and
Robert J. Fleisher
Norden Gilbert and
Ben Thomas
Richard F. Grott
Stephen and
Deborah Haliczzer
Janet Hathaway
Anne C. Kaplan
Dale Osterle
Catherine Raymond and
Alan Potkin
Sally Stevens

Benefactor Members

Jerry and Annette Johns
Kathleen and Richard Katz
Barbara Cole and
John Peters

Thank you to our Sustaining Members whose reliable support is essential for the Museum's continued success. Thank you for your generous commitments!

* Deceased



Left: Vice President of University Advancement and CEO of the NIU Foundation Catherine Squires in her office with a pastel by NIU Alumnus Thom Kapheim (67) in the background. The artwork was a recent gift to the NIU Art Museum Collection by another NIU Alumnus Lee Holt (67). A full article on the gift appears on page 3.



By becoming a Member of the **Friends of NIU Art Museum** you help increase community support for the arts and receive special privileges and benefits. As a **Friend of the NIU Art Museum** you contribute to both the continuance and growth of a valuable cultural resource in northern Illinois. Your membership provides essential support for exhibitions, educational programs, artists' lectures, exhibition-related publications and conservation of the permanent collection.

FRIENDS Membership Individual \$25 / Dual \$45 / Student \$10 / Senior \$15 / Dual Senior \$25

Choice of:

- ⇒ NIU Art Museum Travel Mug
- ⇒ Friends of the NIU Art Museum Ceramic Mug
- ⇒ NIU Art Museum Academic Calendar
- ⇒ NIU Art Museum Tee Shirt*
- *(additional fee of \$5 for Student and Senior members)
- Priority registration and discounted fees on museum activities
- Printed mailing of exhibition announcements
- E-mail announcements/listserve
- Special members-only previews, receptions, bus trips and special events
- 20% discount on NIU Art Museum catalogues
- Subscription to **Museum Notes** newsletter

We have added several new options to the Friends' Collector Print Series (which can be viewed online) and also added a new upper level of membership.

If you are already a current member, please share this form with a friend. Thank you.

SPONSOR Membership \$100

All of the Friends privileges **plus** choice of **one** of the following prints from the **Friends' Collector Print Series**:

- ⇒ Sidney Chafetz, *Public Servant*
- ⇒ William Daley, *Untitled (sketches for ceramics)*
- ⇒ Larry Gregory, *Conkles Hollow, Ohio*
- ⇒ Eugene Larkin, *27 Feathers*
- ⇒ Peter Olson, *Hummingbird Nebula*
- ⇒ Charlotte Rollman, *Hopkins Park, DeKalb*
- ⇒ John Pittman Weber, *Distant Soweto*
- Complimentary exhibition catalogues
- Recognition in **Museum Notes**

PATRON Membership \$250

All of the above Friend & Sponsor privileges **with** choice of **one** of the following prints from the **Friends' Collector Print Series**:

- ⇒ Renie Adams, *Point of View*
- ⇒ Michael Barnes, *Sideshow*
- ⇒ David Driesbach, *Opening Night*
- ⇒ Carl Hyano, *Sushi Trinitron*
- ⇒ Ben Mahmoud, *Night Garden*
- Name engraved on Membership Plaque in Museum

BENEFACTOR Membership \$500

All of the above Friend, Sponsor, and Patron privileges **with** choice of **one** of the following prints from the **Friends' Collector Print Series**:

- ⇒ Susanne Doremus, *Sea Fall*
- ⇒ Jay Ryan, *The Squadron on Patrol*
- Private tour (options available)

Return This Portion to the NIU Art Museum, Altgeld 116, 1425 W. Lincoln Highway, Northern Illinois University, DeKalb, IL 60115

YES! I want to Join Renew my Membership of the NIU Art Museum at the level circled:

Individual \$25 Dual \$45 (2 people, one mailing address) Student \$10 Senior \$15
 Dual Senior \$25 (2 seniors, one mailing address) Sponsor \$100 Patron \$250 Benefactor \$500

***Students and Seniors please enclose copy of current I.D.**

I would like to help with an additional donation of \$_____. Enclosed is my check payable to the NIU Art Museum for \$_____

_____ I do not wish to receive a premium. Please use the entirety of my membership fee and/or donation towards programming and collection conservation.

Premium Selection: _____ Print Collection Selection: _____

Name _____ Street _____

City _____ State _____ ZIP _____ Phone _____

E-mail address _____

Please charge my : Mastercard Visa Discover American Express

Account number _____ Name on card _____

Expiration date _____ Signature _____

I am interested in volunteering: Baking/Receptions Housing artists/scholars overnight Gallery Attendant/Information Desk

Advisory Panels - Area of Interest: Events Fundraiser Education/Outreach Exhibitions Collections

Get-On-The-Bus Trips Other _____

Community Loans & Input

Cameras and Historic Photography equipment needed!

A *Community Call*: Do you have a collection of old cameras, photography equipment or related matter that you would like to share in a public display during our fall, 2017 exhibition suite on photography?

Contact museum staff **NOW** so we can plan this display. Thank you!



About the NIU Art Museum

The NIU Art Museum contributes to the University's educational curriculum and provides opportunities for art education and cultural enrichment throughout the community. The Museum serves to educate, preserve, exhibit, and enlighten by balancing the challenges of contemporary art with the riches of traditional media for a comprehensive examination of visual culture. The NIU Art Museum is located on the first floor, west end of Altgeld Hall, located on the corner of College Avenue and Castle Drives on the main campus of Northern Illinois University in DeKalb, IL.

The exhibitions and programs of the NIU Art Museum are sponsored in part by the Illinois Arts Council Agency; the Friends of the NIU Art Museum; and the Dean's Circle of the College of Visual and Performing Arts, NIU Foundation.



NIU Art Museum's STRATEGIC PLANNING PUBLIC INPUT

We want your feedback – we need your ideas – we want to be the best that we can be. Help the NIU Art Museum determine and direct its next five years via survey or during the community session. Help us prioritize during these public input opportunities.

Survey link to be posted on our website by April 14.

Thursday, April 27, 2017

6-8 p.m. Feedback Forum

Altgeld Hall 125

Pre-registration requested by 4/24/17.

Hand in Hand: The Visual Arts as a Means of Social and Political Propaganda, Protest and Commentary

Spring 2017 Exhibition Suite

March 28 - May 20
 "What a Frightful Spectacle!": Lithographs of Honoré Daumier
 Theoretical Mockery: Satirical Prints by Sidney Chatez
 Over the Top to Victory!

April 6 - May 20
 A Tale of Donkeys and Elephants: Satire with the Wink of a Fox

Public Reception Thursday, April 6, 5 - 7:30 p.m.
 See calendar of events inside for additional programming.

NIU Art Museum
 Altgeld Hall 116, First Floor, West End
 1425 W. Lincoln Hwy.
 Northern Illinois University
 DeKalb, Illinois 60115
 815-753-1936
 Gallery Hours:
 Tuesday - Friday 10 a.m. - 5 p.m.
 Saturday Noon - 4 p.m.
 and by appointment for group tours
 www.niu.edu/artmuseum

