



Museum Notes

A Publication for Members of the NIU Art Museum

Welcome

New Members!

Dana Ditricks-Kunkel
Jennice O'Brien
Michael and
Robin Rothamer

Renewals

Mary and George Cella
Jan Devore
Joanne Dillman
Sandra J. Little
David McMahon
William and
Josephine Monat
Kathleen Pawlak
Patricia Perkins
Brian Reis and
Mary E. LaClair
Lynne Waldeland

The support the Museum receives through your financial gifts and your enthusiasm for the Museum allows us to produce award winning exhibitions and programs for the University, DeKalb community, and beyond.

Join Today! Become a Friend of the NIU Art Museum!



Inside this Issue

- Museum News 2**
- News cont. and Staff 3**
- Programs and Events 4**
- Bus Trips 5**
- Volunteers / Sponsors 6**
- Membership Renewal 7**
- Community Events 8**

Director's Message:

Hello Everyone!

After a long year and a half of data collecting, chart summaries and narrative reports (for the Illinois Board of Higher Education's Seven Year Program Review and Northern Illinois University's Program Prioritization) the NIU Art Museum staff is sorting through reviewer's feedback and putting it to work. I am often told that communications from the university must reach an eighteen -twenty-one, or more likely, fourteen to seventeen (for recruitment purposes) market but my sense is that we offer something different here at the NIU Art Museum. We strive to reach everyone. We offer a uniquely special environment where multiple generations can come together to explore the complexities of our visual world and share their interpretations and experiences together. I like that about us. *Continue p. 3*

Above: Members Diane Rodgers and Jerry Johns visit Motown on the Detroit Gef-on-the-Bus. **Top:** Stuart Henn, Jo Burke, and Pete Olson at the Art Deco opening reception. **Below L-R:** Silver Betel Box, Yangon, Burma Art Collection, Gift of John Lacey, Zwe Mon, untitled, 2013, Acrylic on canvas, (48 x 36 in.). On loan from the Thukuma Collection.



Opening this Fall

August 23 – November 18, 2016

Kaleidoscope of Burmese Art:

Celebrating the 30th Anniversary of the Center for Burma Studies

Journey through Burmese Art

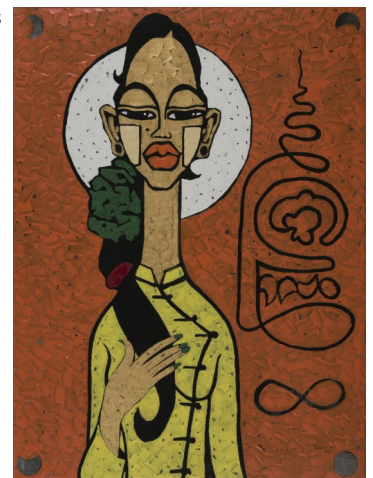
Masterpieces from the Burma Art Collection at NIU

From Tradition to Modernity:

Art from Myanmar as Viewed by Contemporary Burmese Artists

Donors and Collectors: A Legacy

Kaleidoscope features iconic highlights from the Burma Art Collection at NIU representing an array of art from Burma/Myanmar ranging from silver and textiles to recent paintings by modern Burmese artists on loan from the Thukuma Collection.



Winter

(Re)Presenting Guatemala

A series of exhibits and programs on campus exploring traditional socio-cultural practices and recent political history of Guatemala.

January 17-February 24, 2017

Regina José Galindo: Bearing Witness

Documentation of performance works blurring the line between art and activism. This national traveling exhibition is curated by Lia Newman, Director/Curator at the Van Every/Smith Galleries of Davidson College, Davidson, North Carolina.

Visiones e Historias: Mayan Paintings from Guatemala

Featuring the work of Paula Nicho Cúmez and Pedro Rafaél González Chavajay co-curated by Joseph Johnston, Arte Maya, San Francisco, and Kryssi Staikidis, NIU Associate Professor of Art & Design Education.

Closing reception with the painters Thursday, February 24, 5-7 p.m.

Spring

Hand in Hand: The Visual Arts as a Means of Social and Political Protest and Commentary

March 28-May 20, 2017

"What a Frightful Spectacle": Lithographs of Honoré Daumier

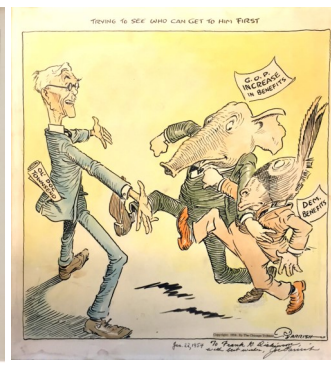
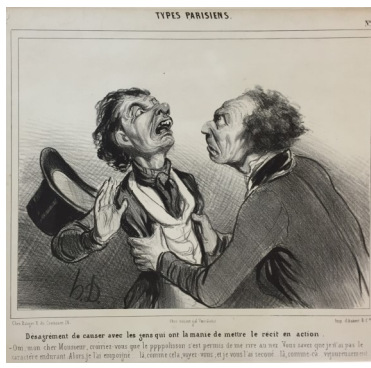
Satirical observations of aristocrats, politicians and the 'average Joe' caught up in the tumultuous civic transformations of 19th century Paris. Curated by Peter B. Olson.

April 6-May 20, 2017

"A Tale of Donkeys and Elephants: Satire with the Wink of a Fox"

Museum Studies capstone project exploring American political/editorial cartoons.

Public Reception Thursday, April 6, 5-7 p.m.



Left to Right: Paula Nicho Cúmez, *El Principio de una Nueva Era, The Beginning of a New Era*, 2012, (33 x 25 in.) On loan from the Helen Moran collection; Pedro Rafaél González Chavajay, *Las Huellas de Ayer y de Hoy, Footsteps of Yesterday and Today*, First panel, 2001, (30 x 40 in.) On loan from the Arte Maya Tz'utuhil collection; Honoré Daumier, *Types Parisiens*, no. 29 1840, Lithograph on wove paper (9.5 x 10.25 in.) NIU Art Museum Collection, Anonymous Gift; Joe Parish, *Trying to see who can get to him first*, 1954, Ink on illustration board (14 x 14 in.) NIU Art Museum Collection, copyright Chicago Tribune 1954.

Paul Kassel Named Dean of the College of Visual and Performing Arts

The new Dean of the CVPA, Paul Kassel, started work at NIU on July 1st bringing his experience and a student and community focused vision for the future. Kassel worked closely with Interim Dean Paul Bauer during a transitional period before his start in July. Kassel's enthusiasm and advocacy for the arts will be motivational for NIU staff, faculty, students and community.

NIU Executive Vice President and Provost Lisa Freeman said in the *NIU Today* that the university is "fortunate to have attracted a dean with his creativity and commitment to community engagement."

Beginning in 2013, Kassel served as the interim Dean of the School of Fine & Performing Arts at SUNY New Paltz where he was a faculty member since 2004 and also served as the Associate Chair of the Department of Theatre Arts and Associate Dean. While at SUNY New Paltz, Kassel taught courses in play analysis and acting, coached student actors, and directed



several productions. He is a professional actor, director, and performance theory scholar.

Kassel remarked in the *NIU Today* that coming to NIU is an honor, "**What I see at NIU is the possibility of helping an already strong college thrive; one that offers a model for the nation about how to educate a new creative class that will innovate and disrupt, but also sustain and honor tradition.**"

Kassel continued, "**I hope to promote a creative environment that encourages risk, allows talent and intelligence to unfold and grow and offers a means to enter the world just ahead of an impending future.**"

The Art Museum is a part of NIU's CVPA along with the Community School of the Arts external programs as well as the three academic Schools: Art and Design, Music, and Theatre and Dance each with award-winning educational programs.

Friends of the NIU Art Museum Members will have a chance to meet Dean Kassel at the *Member's Only* event Sunday, September 18th while enjoying a private event celebrating the 30th Anniversary of the Center for Burma Studies. ■

(More information and RSVP details are inside on p.4)

Museum Staff

Jo Burke, Director
 Peter Olson, Assistant Director
 Stuart W. Henn, Coordinator
 Marketing and Education

Graduate Assistants

Millicent Kennedy
 Charlie Newton
 Zeinab Saab

Museum Assistants

Jillian Allen
 Isabel Angulo
 Jamie Arntzen
 Tania Carlstrom
 Kelsey Duquette
 Samantha Jones

Exhibition Advisory Committee

Michael Bennett
 Mary Glynn Boies
 Barbara Jaffee
 Nina Rizzo
 Diane Rodgers
 Peter Van Ael

Education Advisory Committee

Joshua Anderson
 Cynthia Hellyer-Heinz
 Kryssi Staikidis

If you are interested in joining the Museum's volunteers contact the Museum to share your talents!

Visit www.niu.edu/artmuseum

Phone: 815-753-1936
 Email: artmuseum@niu.edu

Receive our email updates by visiting our website:
www.niu.edu/artmuseum/contactus.

Friend us on Facebook



Follow us on Twitter
 @NIUArtmuseum



Parking is available in the Carroll Ave Visitor's Pay Lot; handicapped and metered spots in front of Altgeld Hall; and during public receptions and programs in Lot 3 northeast of Gilbert Drive and College Avenue. Campus parking is free on weekends and after 5 p.m. weeknights.

Staff Announcements

World Traveler

Assistant Director Peter Olson traveled to Japan in May with an NIU Study Abroad trip co-led by Art History Associate Professor Helen Nagata on Japanese culture, history, art and education. Highlights of the trip included visits to Rurikoji Temple and Pagoda, Gachirinji Temple Yakushi-Do, Hagi Castle, and Hiroshima. Pete will teach *Introduction to Museum Studies* again this fall.

Residency and Exhibitions

Millicent Kennedy recently completed an Artist Residency at the Pick School of Art in McComb, Mississippi. Kennedy has work in two upcoming exhibitions. The first, a group show at Loyola University titled *Bad Editions* curated by Raphael Verra features alternative printing techniques and the second, at Northeastern Illinois University is a two person show with artist Rachelle Hill entitled *A Room with Echoes*.

Welcome

Zeinab Saab is the Art Museum's newest Graduate Assistant who starts this fall as she begins classes at NIU. Zeinab joins us from Bowling Green State University with private gallery experience at Rosenthal Fine Art in Chicago where she was an intern. Zeinab who is from Dearborn, Michigan is a first year MFA printmaking candidate and is also enrolled in the Museum Studies Graduate Certificate program.

Left to Right: Graduate Assistant Millicent Kennedy; Peter Olson is shown here at the Fushimi Inari Shrine in Kyoto.

Continued from the Director's Message...

In fact that is the theme of a new set of hall case posters we worked on this summer with NIU Creative Services. These posters incorporate images from last fall's opening reception and provide a way for us to further share our mission, goals and objectives. They will be used as well when we develop our new informational brochure and membership packet.

Together, with our new CVPA Dean, Paul Kassel, many of you, and others we have not yet met we will begin working on a Strategic Plan for the Museum's operation, direction and development for the next three to five years. Goodness, last year was the Museum's 25th and it slipped right by. Let's make the Museum's 30th in 2021 more of an event!

In the meantime, this year **is** the 30th Anniversary of the Center for Burma Studies and we will participate in the celebration along with the current and emeritus directors of CBS with extensive programs and exhibitions across campus (see details p. 4). This winter we will partner with the Center for Latino and Latin American Studies and the James B. and Rosalyn L. Pick Museum of Anthropology for exhibitions and programs exploring Guatemala. In the spring, hoping you are not sick of it following the election, we will be showing political and social satire, our response to the Charlie Hebdo terror attack in 2015.

We hope you will join us, continue to support us, come to the galleries and *get on the bus*. Come explore and discover the transforming power of art. The Museum staff and I look forward to seeing you during the upcoming year. ■

Jo Burke
 Director, NIU Art Museum



Events Calendar

Thursday, September 8

"Celebrating the Ten Flowers of Burmese Art" Lecture by Dr. Catherine Raymond, Professor, Art History, NIU School of Art and Design and Director, Center for Burma Studies, NIU.
5-5:30 p.m., Altgeld 315

Thursday, September 8

Public Reception
5:30-7 p.m., NIU Art Museum

Thursday, September 15

Public Reception
4:30-6 p.m., Olson Gallery, NIU School of Art and Design
"Is There Contemporary Art in Myanmar Today?" Gallery Talk by Dr. Catherine Raymond.
5 p.m., Olson Gallery, NIU School of Art and Design

Sunday, September 18

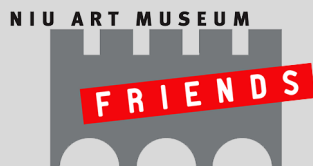
Member's Private Event

1 p.m., NIU Art Museum

Friends of NIU Art Museum members enjoy access to the exhibitions during this private event Sunday afternoon when the Museum is closed to the public. Meet the exhibitions' curator and Director of the Center for Burma Studies Dr. Catherine Raymond. Listen to a private lecture **"Masterpieces of the Burma Art Collection"** jointly presented with Emeritus Professor and Emeritus Director of CBS Dr. Richard M. Cooler and Dr. Raymond.

RSVP by September 14th by calling
815-753-1936

Not a current Member? Join or
renew now to attend!



Saturday, October 1

"Buddhism in Practice: The Burmese Tradition of Meditation and Yoga"

Dr. Catherine Raymond with Cher Ladford, NIU alumna, Yoga Instructor at Breathe, DeKalb
4-5:30 p.m., NIU Art Museum, Rotunda Gallery.
Pre-Registration Required. Limit 20.

Thursday, October 6

DeKalb/NIU Art Walk—Open Late!
5-8 p.m., Art Museum, Olson Gallery, and Founders Memorial Library with *Kaleidoscope of Burmese Art*. Office of the President's Galleries also open to the public with light refreshments.

Thursday, October 6

Reception
4:30-6 p.m., Olson Gallery
Gallery Talk by collector and curator of the Thukhuma Collection, Hong Kong, Dr. Ian Holliday, Professor of Political Science, Vice President and Pro-Vice-Chancellor (Teaching and Learning) at Hong Kong University.
5 p.m., Olson Gallery

Thursday, October 6-Sunday October 9

International Burma Studies Conference
Pre-Registration Required. Information on the International Burma Studies Conference is available at www.burmaconference2016.com/ or by calling 815-753-0512.

Wednesday, October 19

"The Art of Cartography in Ancient Burma" Dr. Tin Naing Win, Associate Professor in History, Mandalay University
7-8 p.m., Rare Books and Special Collections, 4th Floor, Founders Memorial Library. Sponsored by the Friends of the NIU Libraries.

Sunday, October 23

"Beyond the Living: Ghosts and Spirits in Burmese Tradition"

Art making workshop and storytelling program for elementary and middle school age with Dr. Catherine Raymond and Julie Lamb, Former Outreach Coordinator CSEAS.
1-3 p.m., NIU Art Museum
Pre-Registration Required. Limit 15.

Tuesday, October 25

"Identities that Hang by a Thread: The Art of Dress in Myanmar"

Dr. Richard M. Cooler, Emeritus Professor Art History, NIU School of Art and Design and Emeritus Director, Center for Burma Studies, NIU.
6-7 p.m., Altgeld 315



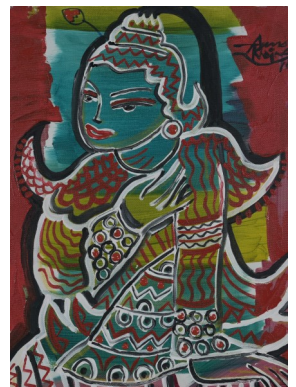
Thursday, November 3

"From Paper to Skin: Tattoos in Burmese Cultures" Dr. Catherine Raymond
5-6 p.m., Altgeld 315

Friday, November 18

In conjunction with International Week **"Lahpet and Palata: Exploring Burmese Culinary Traditions"** *Come and taste a sample!* Dr. Catherine Raymond with Sandar Wynn, Library Assistant, Founder's Memorial Library and May-Myo Khine, Art Undergraduate.
12-1 p.m., Altgeld 125

Aung Khaing, *Htibysaung Medaw Naf*, 2014. Acrylic on canvas. (24 x 18 in.) On loan from the Thukhuma Collection.



For questions or to register for the member's event, children's workshop or meditation/yoga session at the Museum please phone 815-753-1936 or email the Education Coordinator at shenn1@niu.edu.

Get-on-the-Bus Excursions

5.



Tuesday, August 30

Kerry James Marshall at the MCA, Intuit Center, and Moth Story Slam

Payment and Registration by August 22nd.

Limit 15 people. Reserve your seat early! Moth Story Slam venue is 21 and over!

Visit the Museum of Contemporary Art's substantial Kerry James Marshall retrospective that surveys the last 35 years of this prominent Chicago African-American artist's career. Also visit the Intuit Center for Outsider Art's exhibition *Post Black Folk Art in America* before attending a Moth live, open-mic story telling slam. Swindles, heists, and deals with the devil make up the evening's theme "Beg Borrow Steal". Listen to the popular Moth Radio Hour Sundays at 5 p.m. on WNIJ 89.5. *The Moth does not control content, some stories may be explicit or use profanities during the live show.*

Departure: 1 p.m. Expected Return: 11:30 p.m. or later. Price: Museum Members \$30; Non-Member Adult \$40; Non-Member Student/Senior \$35. Ticket price includes transportation and Moth Story Slam ticket. Meals and incidentals not included; Intuit admission suggested donation \$5; admission to MCA is free on Tuesdays.



Wednesday, September 14

America After the Fall and Wink and a Nod

Payment and Registration by September 9.

Spend a morning at the Art Institute of Chicago viewing *America After the Fall: Paintings in the 1930s* when American artists forged a new American modernist identity. Enjoy lunch in the River North neighborhood before visiting *Wink and a Nod: Cartoonists of the Gilded Age* an exhibition of rare original early 20th Century cartoons in anticipation of our own exhibition suite *Hand in Hand: The Visual Arts as a Means of Social and Political Protest and Commentary* this Spring.

Departure: 9 a.m. Expected Return: 4:30 p.m. Price: Museum Members \$20; Non-Member Adult \$30; Non-Member Student/Senior \$25. Ticket price includes transportation. *Not included: Meals and incidentals; AIC admission (IL residents \$22 adults, \$16 seniors/students); Driehaus Museum admission (\$20 adults, \$12.50 seniors, \$10 students).*



Saturday, December 10

Terracotta Warriors at the Field Museum

Payment and Registration by November 21.

Visit *China's First Emperor and his Terracotta Warriors* at the Field Museum, the only North American stop this year for the popular international touring exhibition. See other valued treasures from Emperor Qin Shihuangdi's tomb before enjoying lunch at the Museum's Bistro or Explorer's Café while at the Field. Be sure to take time to visit the Museum's other permanent collections.

Departure: 9 a.m. Expected Return: 4 p.m. Price: Museum Members \$47; Non-Member Adult \$57; Non-Member Student/Senior \$52. *Special exhibition tickets must be purchased in advance. Registration deadline is firm and no refunds or cancellations are offered once group admission package is purchased.* Ticket price includes transportation and ticketed special exhibition admission. Meals and incidentals not included.



Dates and prices are subject to change.



Our recent Fox Valley Art Deco bus trip included several private and behind-the-scenes tours, and for most of us, the opportunity to discover many local gems. Photos by Jo Burke.

Pre-registration and payment required for all Get-on-the-Bus excursions. To sign-up, please contact the NIU Art Museum by phoning 815-753-1936. Payment may be made with cash, check made out to NIU, or major credit card over the phone.

Best Wishes to Paul Bauer, Interim Dean, CVPA, 2015-2016 academic year – wow, what a year – you were an incredible leader for our college, thank you.

Fond Farewell to Agnes Ma, Extra Help Technical Assistant 2015-2016. Congratulations on the new job at Northern Colorado State. Thank you for your hard work and dedication – you made it look so easy.

Our Volunteers:

Michael Bennett, exhibition fabricator and problem solver; **Gary Burchett**, researcher, mailing and food preparation; **Terri Smialek** and **Jitka Hurych**, Bus Trip Researchers Extraordinaire; **Barbara and John Peters**, Collector, Curator, and truckin' crew. Carmin Berchiolly, Rebeka Jacobson, Rae Slowik, Markie Striegel and Keith Ulrich, Museum Studies 656 Students with Pizaaz and Razzmattaz, creators of *Beyond Gatsby* deco show. Tiffany Arnold, Malvina Bardoni, Allison Constanzo, **Brian Reis**, Pam Rohleder, Jessica Strube and Amanda Wolf, Alumini of the NIU Graduate Certificate in Museum Studies program working in area history museums who made sure there were objects to interpret, or means to display, for the *Beyond Gatsby* show.



Rebeka Jacobson, Carmin Berchiolly, Rae Slowik, Markie Striegel and Keith Ulrich

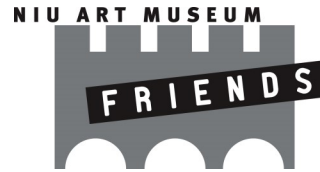
Peter Van Ael, Olson Gallery, Justin Bitner and Jeanne Essex for taking on the stretching and framing of the Thukhuma Collection for *Kaleidoscope of Burmese Art*.

Additional Support

The exhibitions and programs of the NIU Art Museum are sponsored in part by the Illinois Arts Council Agency; the Friends of the NIU Art Museum; and the Dean's Circle of the College of Visual and Performing Arts. Additional support for our Fall shows came from the Office of the President; the Office of the Vice President for Research and Innovative Partnerships; the Olson Gallery, The Elizabeth Allen Visiting Scholars in Art History Fund, the Art History Division at NIU, and the Visiting Artist and Scholar Fund of the School of Art and Design; the International Studies Program at NIU, the Center for Southeast Asia Studies; the Friends of NIU Libraries; and the Center for Burma Studies.

Exhibition Sponsorships

Regina José Galindo: Bearing Witness is organized by the **Van Every/Smith Galleries, Davidson College, Davidson, North Carolina, with the support of the National Endowment for the Arts, the Bacca Foundation Visiting Lecture and Artist Fund, the North Carolina Arts Council, Herb Jackson and Laura Grosch Gallery Endowment, Davidson College Friends of the Arts, Davidson College's Organization of Latin American Students (OLAS), Latin American Studies at Davidson College, and Multicultural Affairs. The exhibition is curated by Lia Newman, Director/Curator at the Van Every/Smith Galleries. ■**



Friends

Audre Anderson
Rivka and William Baker
Joyce Barker
Elizabeth and Avi Bass
Gary Burchett
Pat Burke and John Van Vranken
Penny and Ken Cameron
Mary and George Cella
Anna Marie Coveny
Stacey Deegan
Jan Devore
Joanne Dillman
Julie Dubicz
Kathleen Dust
Patricia Galvan
Tim Griffin and Susan Drow
Patricia Faivre
Sharon Freagon
David and Linda Groat
Cherie Hauptman
Toni Heinz
Barbara Hulseberg
Jitka Hurych
Millicent Kennedy
Janean Koebbe
Donna and Jerry Leonard
Mary Lincoln
Sandra J. Little
Marilyn Loy
Patsy and Bill Lundberg
Elizabeth Mason
Shelia McHugh
David McMahon
Jan Modloff
Gretchen and Charles Moore
Dianne and James Moss
Jennice O'Brien
Julian Olsen
Rosemarie A. Ostberg
Melanie Parks
Sherry Patterson
Kathleen Pawlak
Linda Peterson
Rochelle and Frederick Quade
Caroline Quinlan
Donna Rebold
Diane Rodgers
John and Uli Rooney
Michael and Robin Rothamer
Bill and Kathy Scarpaci
Peggy Simonds
Phyllis Johnson Study
Ivan and Judith Shils
Rosemarie Slavenas
Beverly Smith
Ging and Jerry Smith
Emmylou Studier and Charles Larry
Marian Swenson

Friends cont.

Ruth Anne Tobias
Johanna and Philip Vandrey
Sophia Varcados
Mary VonZellen and James C. Nerstheimer
Jerrold and Carol Zar
Norma Zopp

Sponsor

Michael Barnes
Rudolf and Ingeborg M. Bisanz
Mary Glynn and John Boies
Colin and Deborah Booth
Peggy Burke and Ed Wietecha
Stephen and Deborah Haliczec
Stuart and Michelle Henn
Steven A. Johnson
Ronald Klein
Jerry and Miriam Meyer
William and Josephine Monat
Nicholas Noe
Mary Olson
Mary Quinlan-McGrath
Brian Reis and Mary E. LaClair
Patricia Perkins
Anne Rubendall
Maureen and Morley Russell
Dan and Virginia Seymour
Terri Smialek
Sally Stevens
Sharon Tourville
Thomas Trang
Lynne Waldeland
Christine A. Worley and Peter Hood

Patron

Doug Baker and Dana Stover
Michael and Elaine Bennett
Jo Burke
Natalie Calhoun
Richard and Thecla Cooler
Christa Even
Norden Gilbert and Ben Thomas
Richard F. Grott
Jerry and Annette Johns
Anne C. Kaplan
Catherine Raymond and Alan Potkin

Benefactor

Kathleen and Richard Katz
Barbara and John Peters



Membership Renewals

Membership renewal notices are not mailed. Please check if your membership card is expiring soon and renew.

By becoming a Member of the **Friends of NIU Art Museum** you help increase community support for the arts and receive special privileges and benefits. As a **Friend of the NIU Art Museum** you contribute to both the continuance and growth of a valuable cultural resource in northern Illinois. Your membership provides essential support for exhibitions, educational programs, artists' lectures, exhibition-related publications and conservation of the permanent collection.

7.

FRIENDS Membership Individual \$25 / Dual \$45 / Student \$10 / Senior \$15 / Dual Senior \$25

Choice of:

- ⇒ NIU Art Museum Travel Mug
 - ⇒ Friends of the NIU Art Museum Ceramic Mug
 - ⇒ NIU Art Museum Academic Calendar
 - ⇒ NIU Art Museum Tee Shirt*
- *(additional fee of \$5 for Student and Senior members)

- Priority registration and discounted fees on museum activities
- Printed mailing of exhibition announcements
- E-mail announcements/listserve
- Special members-only previews, receptions, bus trips and special events
- 20% discount on NIU Art Museum catalogues
- Subscription to **Museum Notes** newsletter

We have added several new options to the Friends' Collector Print Series
(which can be viewed online)
and also added a new upper level of membership.

**If you are already a current member,
please share this form with a friend.
Thank you.**

SPONSOR Membership \$100

All of the Friends privileges **plus** choice of **one** of the following prints from the **Friends' Collector Print Series:**

- ⇒ Sidney Chafetz, *Public Servant*
- ⇒ William Daley, *Untitled (sketches for ceramics)*
- ⇒ Larry Gregory, *Conkles Hollow, Ohio*
- ⇒ Eugene Larkin, *27 Feathers*
- ⇒ Peter Olson, *Hummingbird Nebula*
- ⇒ Charlotte Rollman, *Hopkins Park, DeKalb*
- ⇒ John Pittman Weber, *Distant Soweto*
- Complimentary exhibition catalogues
- Recognition in **Museum Notes**

PATRON Membership \$250

All of the above Friend & Sponsor privileges **with** choice of **one** of the following prints from the **Friends' Collector Print Series:**

- ⇒ Renie Adams, *Point of View*
- ⇒ Michael Barnes, *Sideshow*
- ⇒ David Driesbach, *Opening Night*
- ⇒ Carl Hyano, *Sushi Trinitron*
- ⇒ Ben Mahmoud, *Night Garden*
- Name engraved on Membership Plaque in Museum

BENEFACTOR Membership \$500

All of the above Friend, Sponsor, and Patron privileges **with** choice of **one** of the following prints from the **Friends' Collector Print Series:**

- ⇒ Susanne Doremus, *Sea Fall*
- ⇒ Jay Ryan, *The Squadron on Patrol*
- Private tour (options available)

Return This Portion to the NIU Art Museum, Altgeld 116, 1425 W. Lincoln Highway, Northern Illinois University, DeKalb, IL 60115

YES! I want to **Join** **Renew** my Membership of the NIU Art Museum at the level circled:

Individual \$25 Dual \$45 (2 people, one mailing address) Student \$10 Senior \$15
Dual Senior \$25 (2 seniors, one mailing address) Sponsor \$100 Patron \$250 Benefactor \$500

***Students and Seniors please enclose copy of current I.D.**

I would like to help with an additional donation of \$_____. Enclosed is my check payable to the NIU Art Museum for \$_____

_____ I do not wish to receive a premium. Please use the entirety of my membership fee and/or donation towards programming and collection conservation.

Premium Selection: _____ Print Collection Selection: _____

Name _____ Street _____

City _____ State _____ ZIP _____ Phone _____

E-mail address _____

Please charge my : Mastercard Visa Discover American Express

Account number _____ Name on card _____

Expiration date _____ Signature _____

I am interested in volunteering: Baking/Receptions Housing artists/scholars overnight Gallery Attendant/Information Desk

Advisory Panels - Area of Interest: Events Fundraiser Education/Outreach Exhibitions Collections

Get-On-The-Bus Trips Other _____

DeKalb/NIU Arts Walk Events



DeKalb/NIU Arts Walk

5-8 p.m., October 6th

Watch for more information about participating organizations and events for the DeKalb Area Arts Council's Art Walk!

Jazz performance, Egyptian Theater, 8 p.m.

Contact Billie Giese at bag@niu.edu or 815-753-3802 for more information.

NIU Office of the President's Gallery Arts Walk Reception

5-8 p.m., October 6th

NIU President **Doug Baker's** office on the third floor of Altgeld will be open to the public during the DeKalb/NIU Arts Walk to celebrate a new display of undergraduate student art work. Light refreshments will be served.



Contact Ellen Andersen at ellena@niu.edu or 815-753-1999 for more information.

Former President John Peters and current NIU President Doug Baker during the last gallery opening.

The exhibitions and programs of the NIU Art Museum are sponsored in part by the Illinois Arts Council Agency; the Friends of the NIU Art Museum; and the Dean's Circle of the College of Visual and Performing Arts, NIU Foundation.



Fall 2016 Exhibition Suite
 August 23 – November 18, 2016
Kaleidoscope of Burmese Art:
 Celebrating the 30th Anniversary of the Center for Burma Studies
 Thursday, September 8
"Celebrating the Ten Flowers of Burmese Art"
 5 p.m., Altgeld 315
Public Reception
 5:30-7 p.m., NIU Art Museum
 Thursday, October 6
DeKalb/NIU Art Walk—Open Late!
 5-8 p.m.

NIU Art Museum
 Altgeld Hall 116, First Floor, West End
 1425 W. Lincoln Hwy.
 Northern Illinois University
 DeKalb, Illinois 60115
 815-753-1936
 Gallery Hours:
 Tuesday - Friday 10 a.m. - 5 p.m.
 Saturday Noon - 4 p.m.
 and by appointment for group tours
www.niu.edu/artmuseum

