



Museum Notes

A Publication for Members of the NIU Art Museum

Welcome to our newest Members!

New Members

Gary and Marilyn Bellert
Linda Fulton
Kay Harned
Laura Smart

Renewals

Joyce Barker
Mary Burns
Natalie Calhoun
George and Mary Cella
Robert Fleisher and
Darsha Primich
Lesley Gilbert
Larry and
Carme Gregory
Lori Hartenhoff
Barbara Hulseberg
Jitka Hurych
Annette and Jerry Johns
Sandra J. Little
David and
Marcie McMahon
Liz Mehren and
Joe Shapera
James and
Dianne Moss
Linda Oster
Sherry Patterson
Linda Peterson
Fred and Shelly Quade
Rich Rice and
John Calimee
Diane Rodgers
Bill and Kathy Scarpaci
Marian Swenson
Sharon Tourville
Lynne Waldeland

The support the Museum receives through your financial gifts and your enthusiasm for the Museum allows us to produce award winning exhibitions and programs for the University, DeKalb community, and beyond.
Thank you!



Director's Note

Cooler nights, happier dog. Have to get some new school shoes. The NIU Campus and city of DeKalb are getting all gussied up with last minute construction projects before the students return. Sometimes we gritch about budgets and frozen fixtures but that opportunity for a new beginning every fall as the new school year begins never fails to energize and excite. Just toured the recently reopened Stevens Building and saw the new facilities for NIU's Anthropology Department and the School of Theatre and Dance. Many opportunities to say "wow!" It is going to be a good year.



Photo credit: Steven A. Johnson

This 2018-2019 season, the NIU Art Museum is pleased to be part of the year-long celebrations of the 50th anniversary of Jack Arends Hall and the Museum staff members have thoroughly enjoyed the exchanges we have had online and in person in touching base and reconnecting with alumni and former faculty of the NIU School of Art and Design in preparation for our exhibitions. We are looking forward to seeing everyone for the gallery receptions in the School and in the Museum on September 20.

In response to NIU's Program Prioritization process of a few years ago, the themes for our winter and spring shows emerged. This winter, we will explore transparency, a concept we hear a lot about but rarely see (sorry, couldn't resist!). The Museum's call for entries for "Transparency in Form and Content" resulted in almost seventy entries that the Exhibition Advisory Committee will soon be reviewing. This being the year of our rotation with the Center for Burma Studies, its director, **Catherine Raymond**, will treat us to an in-depth exploration of reverse glass painting from Myanmar, and at an international symposium to be hosted on campus, similar traditions throughout Southeast Asia. Come spring, we will attempt to take on DATA, the impact, insights from, and interpretation of the big, driven, visualized data in our lives.

Continued page 2.

Inside this Issue

Exhibits cont.	2
Announcements	3
Events Calendar	4
Get-on-the-Bus Trips	5
Volunteers / Sponsors	6
Membership Renewal	7
Collection Spotlight	8

Subscribe to the museum's email announcements to stay informed between newsletters.

To sign-up, visit niu.edu/artmuseum/about/contact-us.shtml

Confirm your subscription by clicking the link in the confirmation email.



SWEET, Golden and Delicious...

"Faculty-select and Museum-certified" NIU Studio and Design Alumni Artists

August 28 - October 19, 2018

South, Rotunda, and Hall Case Galleries, NIU Art Museum

An invitational exhibition of studio and design alumni artists recommended by current and former faculty, *SWEET, Golden and Delicious...* presents recent work by six dozen artists from five decades representing eleven areas of visual study. Artists needed to be actively practicing and showing their work. Works on view represent a variety of approaches to photography, sculpture, fiber, jewelry and metalwork, printmaking, illustration, ceramics, painting, drawing, graphic design, and time arts. In addition, there is a sound piece, and video documentation of an artist creating a lithograph, and of a large public art piece being made.

This exhibition is part of a larger School of Art and Design celebration of alumni as guest artists, scholars and educators.

Imagery and Icons:

Former Tenure and Tenure-track Faculty exhibition

September 18 - October 19, 2018

North Gallery, NIU Art Museum

As part of the alumni exhibitions and anniversary celebrations this exhibition showcases work from former faculty in an intimate, salon style exhibition.

Participating artists at the time of print include: Renie Adams, Walter Ball, Jay Paul Bell, Richard Beard, Dorothea Bilder, Robert Bornheutter, David Bower, Karen Brown, David Driesbach, Yale Factor, Larry Gregory, Andrew Liccardo, Ben Mahmoud, Ron Mazanowski, Philip Melnick, Ashley Nason, Mark A. Nelson, Jack Olson, Charlotte Rollman, John Rooney, Lee Sido, Doug Stewart, and Ed Syrek.

Director's Note

Continued from page 1.

For this show, we are pleased to work with guest curator, NIU art educator and philosopher, Richard Siegesmund. We again have out a call for entries, will utilize some pieces from our permanent collection and invite a few artists to have this conversation with us as well.

For our bus trips this season, we are taking advantage of the amazing offerings of the Art and Design Chicago Festival sponsored by the Terra Foundation. These trips will also get you thinking about concepts in our shows.

Jo Burke

Transparency Exhibition Suite

November 15 - February 15, 2019

(closed university holidays)

Transparency in Form and Content

Examines the spectrum of interpretation of the word "transparency"; from the literal to the figurative. Artists who explore both the visual phenomenon of transparency and the concept of "transparency" in content, be that process, funding, idea or material.

Vanishing Art from Myanmar: The Buddhist Reverse Glass Painting Tradition

Explores the complex Buddhist tradition as it is revealed through the work of some artists from the last village in Burma dedicated to the reverse glass painting technique and tradition known since the art form's introduction to the region in the 18th century.

Curated by Dr. **Catherine Raymond**, Director, Center for Burma Studies and Professor of Art History and presented in conjunction with the International Symposium, "Looking Through The Glass: The Asian Reverse Glass Painting Traditions" on November 16, 2018. Raymond's research was funded by a Rakow Grant from the Corning Museum of Glass in Corning, NY.

Data: BIG/-driven/Visualized...

March 28 - May 17, 2019

This exhibition delves into the array of manner in which data surrounds us, impacts us and is interpreted. *BIG/-driven/Visualized...* explores the data in our lives.

Guest Curator: Richard Siegesmund is Professor of Art+Design Education in the School of Art and Design at Northern Illinois University. He has an interest in both quantitative and qualitative research, and the design of data reports that promote thoughtful public reflection and discussion.

This exhibition is sponsored in part by Northern Public Radio.



Museum Staff

Jo Burke, Director
 Peter Olson, Assistant Director
 Stuart W. Henn, Coordinator
 Marketing and Education

Graduate Assistants

Zach Bath
 Christina Kang

Christina Warzecha
 Extra Help, Installation Preparator

Museum Assistants

Isabel Angulo
 Jamie Arntzen
 Georgi Beck
 Ashly Bieche
 Avery LaPlante
 Ari Norris
 Sarah O'Heron
 Sai Harini Perugupalli
 Elizabeth Russo

Exhibition Advisory Committee

Michael Bennett
 Mary Glynn Boies
 Nina Rizzo
 Diane Rodgers
 Peter Van Ael


Education Advisory Committee


Joshua Anderson
 Cynthia Hellyer-Heinz
 Kryssi Staikidis

If you are interested in joining the Museum's volunteers contact the Museum to share your talents!

Visit niu.edu/artmuseum
 Phone: 815-753-1936
 Email: artmuseum@niu.edu

Receive our email updates by visiting our website:
niu.edu/artmuseum/contactus.

 Friend us on Facebook

 Follow us on Twitter
 @NIUArtmuseum

Parking is available in the [Visitor Pay Lot](#) located at 200 Carroll Ave., east of Annie Glidden Rd. on Lincoln Hwy. Limited metered spots and handicapped parking is available in front of Altgeld and Lowden Halls. Campus parking is free on weekends and after 5 p.m. weeknights.

Staff Announcements

The Art Museum welcomes two new Graduate Assistants this fall, Zachary Bath and Christina (Chris) Kang. They started in early August training with Curator and Assistant Director Pete Olson installing the Sweet, Golden and Delicious exhibition before classes started.

Zach Bath (above left) is a second year graduate student at NIU pursuing an MFA in Printmaking. Bath was born and raised in Rock Springs, Wyoming and received a BA in Studio Art from the University of Wyoming in 2017. His work consists of large scale woodcut prints and lithographs done primarily in black and white with an expressionistic and medieval aesthetic.

Christina (Chris) Kang (above right) was born and raised in Morgantown, West Virginia and graduated from West Virginia University with a BFA in Printmaking. Christina will be a first-year printmaking MFA candidate at NIU this Fall. She has previous gallery experience as an intern at Pittsburgh's Artists Image Resource, a nonprofit printshop. When she isn't in the studio, Christina enjoys reading sci-fi novels, cooking, and hiking.

Peter Olson recently juried the 35th Annual Sugar Creek Arts Festival in Uptown Normal, Illinois along with fellow juror Alfonso Gosálbez Berenguer, a local artist and teacher. Peter's own work was recently selected for the *Golden: School of Art and Design Jack Arends Hall 50th Anniversary Juried Alumni Show* opening September 4. You can see his work on view there through October 19, 2018. •



Arts Blog

Sign up for the Arts Blog

Keep up with the most interesting stories from all of the areas that make up Northern Illinois University's College of Visual and Performing Arts, and don't miss any of our exciting upcoming events.

<http://niuarts.com/newsletter-opt-in/>



Collection Spotlight

Continued from page 8.

Although this piece comes with instructions for a pre-made image, the goal was for an individual to produce their own image by removing and replacing each piece to their liking. He viewed shapes and color as its own alphabet and saw these as their own language. The range of imagery made from this piece is unlimited, leaving room for constant play and curiosity.

Victor Vasarely was born in Hungary in 1906 and is considered to be one of the founders and leaders of the Op-Art movement in Europe that explored non-objective images which created optical illusions, vibrating patterns, and the impression of movement. His original career plans were to become a doctor in medicine, but instead decided to pursue a career in art, first studying academic painting at Podolini-Volkman Academy in 1927. Later, Vasarely studied in Budapest at *Műhely*, literally, "Workshop," that taught applied arts in the style of the German Bauhaus.

Vasarely is well known for his optical illusions and formalistic play on color and shapes. His works focused on the elements of design, using flat two-dimensional shapes and colors that exclude a sense of depth, space, and scale. See image page 8.

-Zeinab Saab, former Museum Graduate Assistant, NIU M.F.A. printmaking. •

Public Receptions

Thursday, September 20
5 – 8 p.m., NIU Art Museum

School of Art and Design Reception

5 – 8 p.m., Jack Olson Gallery, Jack Arends Hall

School of Art and Design 50th Anniversary

All Alumni Open Exhibit and Mail Art Show

August 24 - October 19, 2018

An open exhibition of two and three-dimensional work that fit and shipped in a USPS Flat Rate Priority mailer on view in the Annette and Jerry Johns Student Art Gallery. Artist had the option to contribute work for a future auction to raise funds for School of Art and Design scholarships.

Golden: School of Art and Design Juried Alumni Show

September 4 - October 19, 2018

Dan Silverstein, Associate Director of Collections and Exhibitions Management at the Mary and Leigh Block Museum of Art at Northwestern University in Evanston served as juror for the exhibition. Silverstein is a 1992 NIU BFA alumnus. Awards include the invitation to exhibit work in an alumni group show at the Jack Olson Gallery in 2019 and two solo shows at the Olson Gallery in 2020.

Alumni Salon

September 27 - October 19, 2018

An option-in exhibition of works not included in the juried show on display in the halls cases on the second floor of Jack Arends Hall/Visual Arts Building.

Events Open to the Public

Wednesday, September 26

Visiting Artist Public Lecture with Christian Ortiz

Ortiz received his BFA in fiber studies and his BSED in art education from Northern Illinois University, and his MFA in fiber and material studies from the School of the Art Institute of Chicago. As an educator, Ortiz works as Senior Manager of Studio Programs at Marwen, a non-profit that provides free arts education to Chicago students in under resourced neighborhoods. 5 p.m., AB100 Jack Arends Hall/Visual Arts Building

Elizabeth Allen

Visiting Scholars in Art History

Alumni Speakers

Monday, September 17

"A Cultural Capital Quagmire: How the Art Market and not Curators or Art Critics legitimize cultural products today" Elaine King, Professor Emerita, College of Fine Arts, School of Art, Carnegie Mellon University

Wednesday, October 17

"Defining Sacred Spaces: Sculpture in the Romanesque Church" Thomas Russo, Associate Dean, International Programs; Professor, Art History, Drury University

Tuesday, November 20, 2018

"Image as Information: Materialising the Buddha in late Burmese art" Alexandra Green, Henry Ginsburg Curator for Southeast Asia, British Museum

Monday, February 4, 2019

"All Eyes on Space: An Architectural History of Television" Samuel Dodd, Visiting Assistant Professor, Ohio University

Wednesday, February 27, 2019

"Serious Change: Toward A More Meaningful Diversified Artworld" Freida High W. Tesfagiorgis, Evjue-Bascom Professor Emerita of African and African American Art History and Visual Culture, University of Wisconsin Madison

Tuesday, April 9, 2019

"Xena Warrior Princess Meets Efraín Ríos Montt: Contemporary Maya Dance and Pop Culture Imagery in Highland Guatemala" Rhonda Taube, Professor and Chair, Department of Art and Art History, Riverside City College

All lectures 5 p.m., Auditorium 100, Jack Arends Hall/Visual Arts Building.

Only have a few minutes to spare?

Drop-in and join us for a quick talk!

Be in the galleries during selected times to hear a two to five-minute Flash Tour with Museum staff as they give insider explanations into a single work on view. Look for the logo label in the galleries at these Flash Tour times starting September 4:

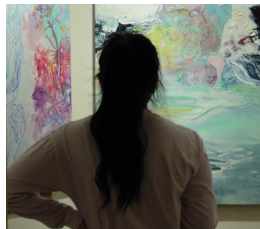
Tuesday 2:30 p.m.

Wednesday 3:30 p.m.

Thursday 12:30 p.m.

Thursday 5:15 p.m.*

*Except during other scheduled Museum events.



Visiting Arts Educator

Alumni Workshops Series

featuring

Gerry James, Matt Etherington, Deyana Matt, Rick Stachon, Don Dvorak, and Teresa McGee

At the time of print still to be scheduled.

For questions or more information on the events at the NIU Art Museum please phone 815-753-1936 or email the Education Coordinator at shenn1@niu.edu.



Sunday, September 30
Gilded Age Chicago:
 Art Institute of Chicago's
John Singer Sargent
 and the Driehaus'
Portraits of an Era.

Take a step back in time to Chicago's Gilded Age of opulence and luxury. View the AIC's exhibition John Singer Sargent and Chicago's Gilded Age that presents his lush and striking portraits that illuminates his connection to Chicago and the city's vibrant art scene. Also enjoy a walking tour of McCormickville's mansions as Sally Kalmbach

recounts the lives of prominent families and notable public figures that called the area home. Finally, visit the Driehaus Museum's Gilded Chicago: Portraits of an Era of wealthy socialites and prominent Chicagoans as they sought to highlight their social standing and affluence through these lavish commissions. *Group size limited to 15 participants!*

RSVP by 09/11. Departure 9:00 a.m. Expected Return 7:30 p.m. Price: NIU Art Museum Members \$55; Non-Member St/Sr \$60; Non-Member Adult \$65. Ticket price includes transportation, tour and Driehaus admission. Meals and incidentals not included. AIC Admission on your own (AIC Members free; IL residents \$22 Adults; \$16 St/Sr. Special exhibition admission for AIC Members free; \$7 all others).



Tuesday, October 2
I was Raised on
the Internet
at the MCA

Raised on the Internet focuses on how the internet changed the way we experience the world and

the shifts that have occurred since the millennium. The exhibition acknowledges a post-internet world of art making and the complexity of the online multiverse perceived as both dystopic and utopic simultaneously. This excursion visits the MCA show leading up to our own exhibition on data that delves into the array and manner in which data surrounds us, impacts us and is interpreted by visual artists. While in Chicago visit the River North and West Loop gallery districts to visit several of the galleries at your own pace with time for dinner in River North's or Water Tower's restaurants.

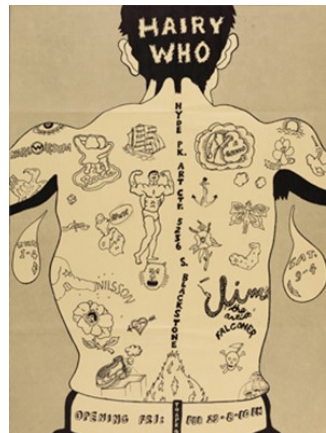
RSVP by 09/25. Departure 12:30 p.m. Expected Return 10 p.m. Price: NIU Art Museum Members \$25; Non-Member St/Sr \$30; Non-Member Adults \$35. Ticket price includes transportation. MCA admission free Tuesday for IL residents. Meals and incidentals not included.

Saturday, November 3
SOFA Expo and
Create Your Own
Functional Art

Join us for a day at the Sculpture Objects and Functional Art and Design

Fair—the premier gallery-presented art fair dedicated to three-dimensional art and design—at Navy Pier, Chicago. SOFA presents artwork that crosses the boundaries of fine art, decorative art, and design. Afterward, create your own functional art at Ed Hoy's, an art glass supplier and studio in Warrenville. You can create four colorful fused, slumped glass dishes in a private beginner level class or pair with a friend to split the cost and take home two dishes! Dishes will be kiln fired after class and ready for pick up at the Art Museum when finished. (Please allow two to three weeks.) *Group size limited to 15 participants!*

RSVP by 10/29. Departure 9:30 a.m. Expected Return 7 p.m. Price: NIU Art Museum Members \$25; Non-Member St/Sr \$30; Non-Member Adult \$35. Ticket price includes transportation. SOFA admission on your own (Adults \$25; Sr/St. with ID \$15). Ed Hoy class \$65 or partner with a friend to split the cost. Meals and incidentals not included.



Friday, December 7
The Chicago Imagists:
Hairy Who?

Explore this unique moment in Chicago's art scene and discover the self-defined group of artists that included Jim Falconer, Art Green, Gladys Nilsson, Jim Nutt, Suellen Rocca, and Karl Wirsum. Visit the Art Institute of Chicago's exhibition *Hairy Who: 1966-1969* that explores the group's bold, graphic work and history of

their exhibitions at the Hyde Park Art Center. Also visit the Elmhurst Art Museum's exhibition of Imagists work on loan from the Elmhurst College Art Collection curated by Suellen Rocca with a special private introduction and overview from the distinguished artist herself. Since 2006, Rocca has served as the Curator and Director of Exhibitions overseeing the Imagist collection at the College and has championed its importance.

RSVP by 11/30. Departure 9 a.m. Expected Return 6 p.m. Price: NIU Art Museum Members \$25; Non-Member St/Sr \$30; Non-Member Adult \$35. Ticket price includes transportation. AIC Admission on your own (AIC Members free; IL residents \$22 Adults; \$16 St/Sr.; EAM admission free first Friday of the month). Meals and incidentals not included.



The NIU Art Museum's Get-On-The-Bus trips should not be missed!

Phone 815-753-1936. Payment may be made with cash, check made out to NIU, or major credit card over the phone.

Our Volunteers

The Museum would like to extend a special thanks to the following volunteers and individuals for their continued support. Special thanks to: **Robert Banke** for collection documentation photography and installation assistance; **Gary Burchett** for mailing assistance and technology advice; Dan Grych, DeKalb Art Gallery online and the Art Box, for assistance contacting former faculty for the *Imagery and Icons* exhibition; and **Terri Smialek** for overnight excursion research and serving as gallery attendant.

Support

The exhibitions and programs of the NIU Art Museum are sponsored in part by the Illinois Arts Council Agency; the Friends of the NIU Art Museum; and the College of Visual and Performing Arts' Season Presenting Sponsor Shaw Media.

Exhibitions

Artwork and objects for the *SWEET, Golden and Delicious* and *Imagery and Icons* exhibitions are on loan from the individual artists and their families; The Art Box, DeKalb; private collectors; and the NIU Art Museum Collection.

Annual Members

Thank you for your generous commitments!

Friends

Audre Anderson
 Alex Aubry
 Rivka and William Baker
 Vivian Bandy
 Robert Banke
 Joyce Barker
 Elizabeth and Avi Bass
 Gary and Marilyn Bellert
 Donna Benson
 Robert and Doris Boey
 Judy Burgess
 Mary Burns
 Penny and Ken Cameron
 George and Mary Cella
 Gary and Dee Coover
 Anna Marie Coveny
 Stacey M. Deegan
 Ellen Roth Deutsch and
 Herb Deutsch
 Jan Devore
 Joanne and
 Daniel Dillman
 Dana Ditrichs-Kunkel
 Kathleen Dust
 Mavis and
 Michael Eckman
 Patricia Faivre
 Janis FitzHenry
 Ann Fricke
 Claudia and Tom Frost
 Linda Fulton
 Patricia Galvan

David and Linda Groat
 Kay Harned
 Lori Hartenhoff
 Cherie Hauptman
 Darby and Thomas Hills
 Barbara Hulseberg
 Jitka Hurych
 Teresa Iversen
 Charles Larry and
 Emmylou Studier
 Elizabeth Mehren and
 Joe Shapera
 Michael and Melinda Keck
 Debbie Kenny
 Donna M. and
 Jerry A. Leonard
 Scott Talbot Lewis and
 Tony Gibbons
 Amy Levin
 Mary Lincoln
 Sandra J. Little
 Marilyn Loy
 Patsy and Bill Lundberg
 Sheila McHugh
 David and
 Marcie McMahan
 Jan Modloff
 Frances Moon
 Gretchen and
 Charles Moore
 Sharon Nelson
 Jennice O'Brien
 Juliann K. Olsen
 Kay Ostberg



Northern Illinois University Acting President Lisa Freeman visits with guest curator Nirmal Raja during the Spring, 2018 public reception for *Reclaimed Baggage*, an exhibition that explored identity, migration and globalization in the work of South Asian American women artists.

Linda Oster
 Dale Osterle
 David Parker
 Melanie Parks
 Sherry Patterson
 Kathleen Pawlak
 Linda T. Peterson
 Rochelle and
 Frederick Quade
 Caroline Quinlan
 Rich Rice and
 John Calimee
 Diane Rodgers
 John and Ursula Rooney
 Michael and
 Robin Rothamer
 Alicia Ryley
 Bill and Kathy Scarpaci
 Linda Schwarz
 Ivan and Judith Shils
 Peggy Simonds
 Phyllis Johnson Study
 Rosemarie Slavenas
 Ging and Jerry Smith
 Beverly Ann Smith
 Ruth Anne Tobias
 Sharon Tourville
 Johanna and
 Philip Vandrey
 Sophia Varcados
 Mary Von Zellen
 Jerrold and Carol Zar
 Norma Zopp

Sponsors

Michael Barnes and
 Kryssi Staikidis
 Rudolf and Ingeborg Bisanz
 Peggy Burke and Ed Wietecha
 Susan Carter and Robert Sabin
 John and Nancy Castle
 Edward and Donna Flanagan
 Lesley Gilbert
 Stephen and Deborah Haliczzer
 Janet Hathaway
 Stuart Henn
 Steven A. Johnson
 Ronald G. Klein
 Jerry and Miriam Meyer
 Mrs. William Monat
 James and Dianne Moss
 Nicholas Noe
 Mary B. Olson
 Peter Olson
 Patricia Perkins
 Mary Quinlan-McGrath
 Brian Reis and Mary E. LaClair
 Maureen and Morley Russell
 Dan and Virginia Seymour
 Terri Smialek
 Marian Swenson
 Patricia S. Vary
 Lynne M. Waldeland

Patrons

Douglas Baker and Dana Stover
 Michael and Elaine Bennett
 Mary-Glynn and John Boies
 Deborah and Colin Booth
 Jo Burke
 Natalie J. Calhoun
 Norden Gilbert and Ben Thomas
 Richard Grott
 Anne C. Kaplan
 Paul and Kit Kassel
 Carol Luc
 Beth and Harvey Plotnick
 Darsha Primich and Robert
 Fleisher
 Catherine Raymond and
 Alan Potkin
 Sally Stevens
 Promod and Anju Vohra
 Christine Worley and
 Peter J. Hood

Benefactors

Richard and Thecla Cooler
 Larry and Carmeda Gregory
 Jerry and Annette Johns
 Kathleen and Richard Katz
 Barbara and John Peters

Thank you for your
 continued support.



BECOME A FRIEND!

Engage and benefit from a closer connection with the arts! Enjoy early-bird announcements, discounts, and members' only events. Take satisfaction in your vital commitment to support our exhibitions, programs and the preservation of our collection. Join Now!

If you are already a current member, please share this form with a friend. Thank you.

Friends Level

Individual \$25 / Dual \$45 (2 people, one address) / **Student \$10 / Senior \$15 / Dual Senior \$25** (2 seniors, one address)

Sponsor \$100

Choice of **one** Sponsor Collector Print Series:

Sidney Chafetz, *Public Servant*
 William Daley, *Untitled (sketches for ceramics)*
 David Driesbach, *The Pied Piper*
 Larry Gregory, *Conkles Hollow, Ohio*
 Peter Olson, *Hummingbird Nebula*
 Charlotte Rollman, *Hopkins Park, DeKalb*
 John Pitman Weber, *Distant Soweto*

Patron \$250

Choice of **one** Patron Collector Print Series:

Renie Adams, *Point of View*
 Michael Barnes, *Sideshow*
 David Driesbach, *Opening Night*
 Carl Hayano, *Sushi Trinitron*
 Ben Mahmoud, *Night Garden*

Benefactor \$500

Choice of **one** Benefactor Collector Print Series:

Susanne Doremus, *Sea Fall*
 Jay Ryan, *The Squadron on Patrol*

Membership Level Benefits

	Friend	Sponsor	Patron	Benefactor
Choice of one Friends of the NIU Art Museum premium	■	■	■	■
Priority registration and discounted fees on museum activities	■	■	■	■
Printed mailing of exhibition announcements	■	■	■	■
Special members-only previews, receptions, bus trips and special events	■	■	■	■
20% discount on NIU Art Museum catalogues	■	free	free	free
Subscription to <i>Museum Notes</i> members' newsletter	■	■	■	■
Recognition in <i>Museum Notes</i>		■	■	■
Name engraved on Membership Plaque in Museum			■	■
Private tour (options available)				■



YES! I want to **Join** **Renew** at the indicated level below: *Students and Seniors please enclose copy of current I.D.*

Individual \$25 / Dual \$45 (2 people, one address) / Student \$10 / Senior \$15 / Dual Senior \$25 (2 seniors, one address)

Sponsor \$100 Patron \$250 Benefactor \$500 I would like to help with an additional donation of \$ _____.

Please keep my premium and use my entire gift for programming and collection care.

Premium Selection _____ Print Series Selection _____

Name _____

E-mail _____

Address _____

Payment

Check enclosed payable to NIU Art Museum for \$ _____.

City _____ State _____ ZIP _____

Please charge: Visa Mastercard Discover Amer Exp Expiration _____

Phone _____ Mobile _____

Account number _____

I am interested in volunteering for:

Baking/Receptions Housing artists/scholars overnight Gallery Attendant/Information Desk Researching Get-On-The-Bus Trips Other _____

Serving on an Advisory Panels: (Area of Interest: Events Fundraiser Education/Outreach Exhibitions Collections)

Return this portion to the NIU Art Museum, Altgeld 116, 1425 W. Lincoln Highway, Northern Illinois University, DeKalb, IL 60115

Collection Spotlight



Planetary Folklore Participations No. 1

Victor Vasarely (Hungarian-French b.1906 d.1997)

Victor Vasarely's *Planetary Folklore Participations No. 1* is a color optics puzzle made of plastic and metal designed in 1969. Vasarely produced this piece in an edition of 3,000 believing that everyone should have the ability to enjoy this "game".

Continued page 3.

Victor Vasarely. *Planetary Folklore Participations No. 1*, 1969. Interactive Plastic, Metal and Magnets (20 x 20 in.). NIU Art Museum Collection. 1985.14. Gift of Robert E. Vogele.

Serving Campus and Community by Balancing Traditional and Contemporary Art to Explore the Connections Made through Visual Culture.

The NIU Art Museum First Floor, West End of Altgeld Hall, located on the corner of College Avenue and Castle Drives on the main campus of Northern Illinois University in DeKalb, IL.

The exhibitions and programs of the NIU Art Museum are sponsored in part by the Illinois Arts Council Agency; the Friends of the NIU Art Museum; and the College of Visual and Performing Arts' Season Presenting Sponsor Shaw Media.



NORTHERN ILLINOIS UNIVERSITY
College of Visual and Performing Arts

2018 - 2019 Season Performances Presented By
SHAW MEDIA
est. 1951

September 18 - October 19, 2018
*Former Tenure and Tenure-track Faculty
Imagery and Icons:*

August 28 - October 19, 2018
"Faculty-select and Museum-certified" NIU
Studio and Design Alumni Artists
SWEET, Golden and Delicious...

Thursday, September 20
5 - 8 p.m., NIU Art Museum
Public Reception

NIU Art Museum
Altgeld Hall 116, First Floor, West End
Northern Illinois University
DeKalb, Illinois 60115
815-753-1936
Gallery Hours:
Tu, W, F 10 a.m. - 5 p.m.; Th Noon - 7 p.m.;
Sun Noon - 4 p.m.; and by appointment for group tours.
niu.edu/artmuseum

